

DOVER, DELAWARE

RNAV (GPS) RWY 1

WAAS CH 52207 W01A	APCH CRS 015°	Rwy ldg 9602 TDZE 25 Arprt Elev 29
--------------------------	------------------	--

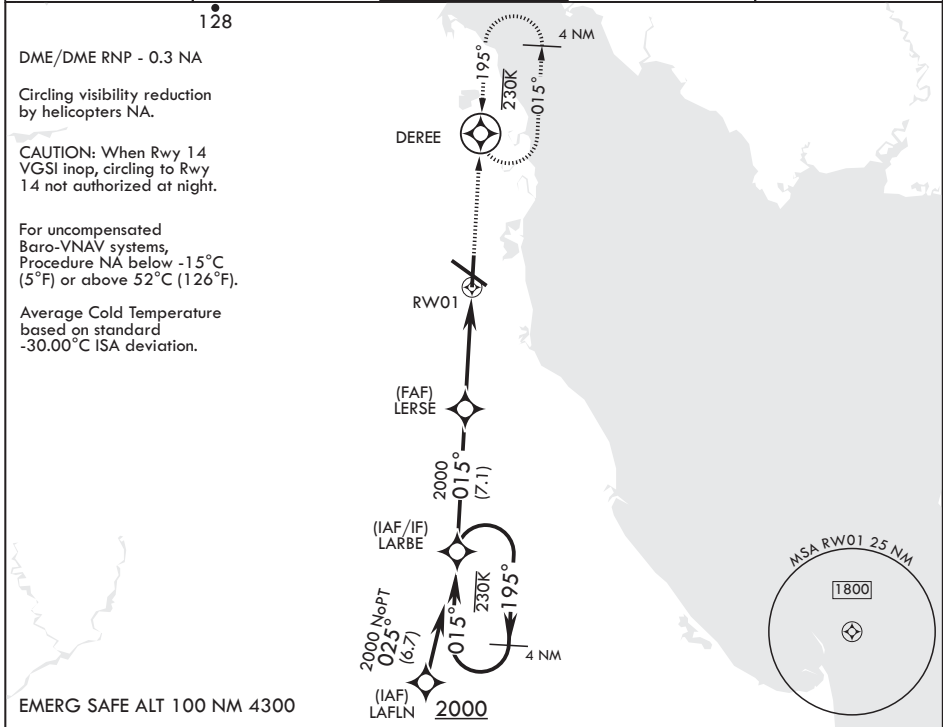
AL-562 (USAF)

DOVER AFB (KDOV)

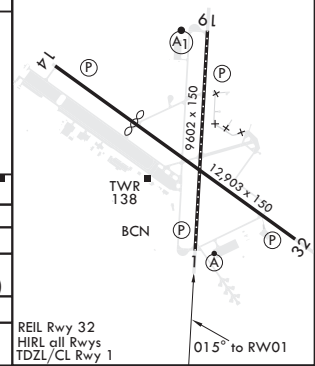
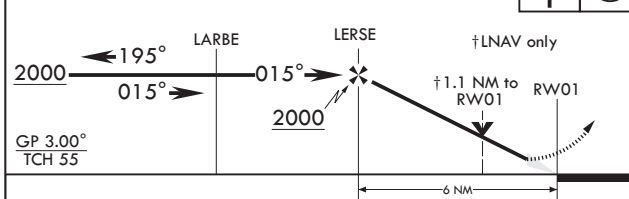
V * When ALS inop increase RVR to 40, vis to 3/4 mile. When TDZ/CL lights inop increase RVR to 24.
 ** When ALS inop, increase CAT AB RVR to 45, vis to 7/8 mile; CAT CD RVR to 50, vis to 1 mile.
 *** When ALS inop increase CAT AB RVR to 55, vis to 1 mile; CAT CD vis to 1 1/4 miles.

ALSIF-2 MISSED APPROACH: Climb to 2000 direct DEREE and hold, continue climb-in-hold to 2000.

ATIS 127.825 273.5	APP CON 132.425 257.875	TOWER 126.35 279.625	GND CON 118.875 225.4	CLNC DEL 125.55 289.4
-----------------------	----------------------------	-------------------------	--------------------------	--------------------------



VGSi and RNAV glidepath not coincident (VGSi angle 3.00/TCH 75.10).	2000	DEREE	ELEV 29	TDZE 25
---	------	-------	---------	---------



CATEGORY	A		B		C		D	
LPV DA*	225/18		200		(200-1/2)			
LNAV/VNAV DA**	329/24 304 (300-1/2)	340/24 315 (400-1/2)	348/26 323 (400-1/2)	359/26 334 (400-1/2)				
LNAV MDA***	460/24	435 (500-1/2)	460/40	435 (500-3/4)				
C CIRCLING	500-1	520-1	540-1 1/2	580-2				
	471 (500-1)	491 (500-1)	511 (600-1 1/2)	551 (600-2)				

DOVER, DELAWARE 39°08'N - 75°28'W DOVER AFB (KDOV)

Amdt 2 05DEC19 TERPS

RNAV (GPS) RWY 1

NE-3, 08 OCT 2020 to 05 NOV 2020

NE-3, 08 OCT 2020 to 05 NOV 2020