

DOVER, DELAWARE

RNAV (GPS) RWY 19

WAAS CH 52208 W19A	APCH CRS 195°	Rwy ldg 9602 TDZE 23 Arprt Elev 29
--------------------------	------------------	--

AL-562 (USAF)

DOVER AFB (KDOV)

⚠ * When ALS inop, increase RVR to 40, vis to 3/4 mile.
 ** When ALS inop, increase RVR to 45, vis to 7/8 miles.
 *** When ALS inop, increase CAT AB RVR to 55, vis to 1 mile, CAT CD vis to 1 1/4 miles.

ALSF-1
 MISSED APPROACH: Climb to 2000 direct LERSE and hold.

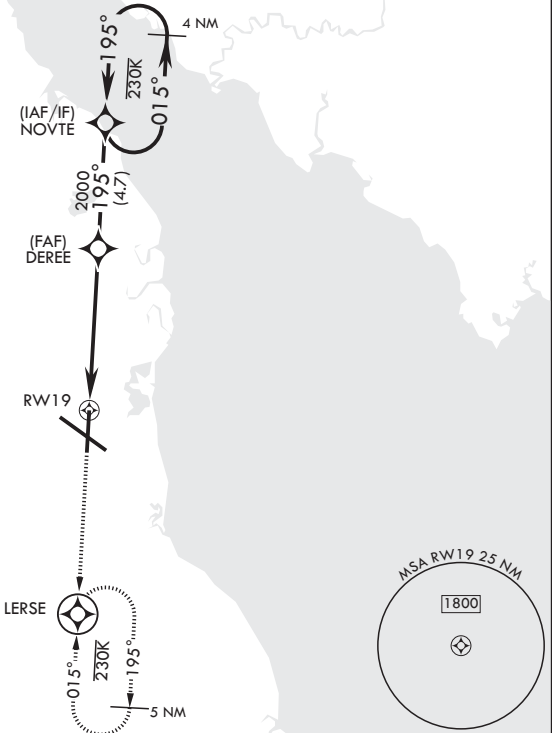
ATIS 127.825 273.5	APP CON 132.425 257.875	TOWER 126.35 279.625	GND CON 118.875 225.4	CLNC DEL 125.55 289.4
-----------------------	----------------------------	-------------------------	--------------------------	--------------------------

DME/DME RNP - 0.3 NA
 Circling visibility reduction by helicopters NA.

128

CAUTION: When Rwy 14 VGSIs inop, circling to Rwy 14 NA at night.

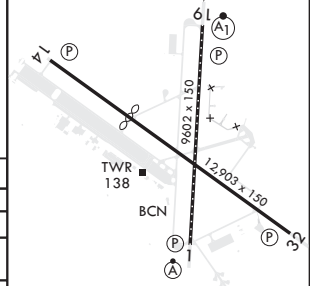
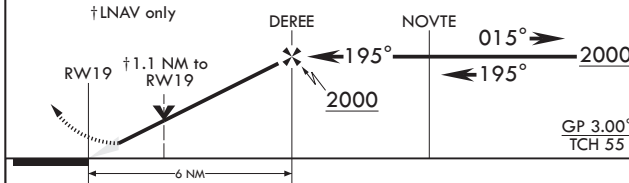
For uncompensated Baro-VNAV systems, procedure NA below -15°C (5°F) or above 52°C (127°F).



EMERG SAFE ALT 100 NM 4300



ELEV 29 Rwy 14 ldg 8652'	TDZE 23 195° to RWY 19
-----------------------------	---------------------------



CATEGORY	A	B	C	D
LPV DA*	223/24		200	(200-1/2)
LNAV/VNAV DA**	310/24 287 (300-1/2)	321/24 298 (300-1/2)	329/24 306 (300-1/2)	340/24 317 (400-1/2)
LNAV MDA***	460/24	437 (500-1/2)	460/40	437 (500-3/4)
CIRCLING	500-1	520-1	540-1 1/2	580-2
	471 (500-1)	491 (500-1)	511 (600-1 1/2)	551 (600-2)

HIRL all Rwys
 REIL Rwy 32
 TDZL/CL Rwy 1

DOVER, DELAWARE

39°08'N - 75°28'W

DOVER AFB (KDOV)

Amdt 2 05DEC19
 TERPS

RNAV (GPS) RWY 19

NE-3, 08 OCT 2020 to 05 NOV 2020

NE-3, 08 OCT 2020 to 05 NOV 2020