

DOVER, DELAWARE

TACAN RWY 1

TACAN DOV Chan 37	APCH CRS 008°	Rwy ldg TDZE Arprt Elev	9602 25 29
----------------------	------------------	-------------------------------	------------------

AL-562 (USAF)

DOVER AFB (KDOV)

<p>▼ * When ALS inop, increase CAT AB to 55, vis to 1 mile, CAT CDE vis to 1 3/8 miles.</p>	<p>ALSF-2</p> 	<p>MISSED APPROACH: Climb to 2000 via DOV TACAN R-017 to DERE/DOV 6.7 DME and hold.</p>
---	---	---

<p>ATIS 127.825 273.5</p>	<p>APP CON 132.425 257.875</p>	<p>TOWER 126.35 279.625</p>	<p>GND CON 118.875 225.4</p>	<p>CLNC DEL 125.55 289.4</p>
-------------------------------	------------------------------------	---------------------------------	----------------------------------	----------------------------------

CAUTION: When Rwy 14 VGSI inop, circling to Rwy 14 NA at night.

115

DOVER
DOV
Chan 37

(IAF) CUXOK
DOV
7

(IAF) GLUME
DOV
13

(IF) WEFIT
DOV
13

(IAF) CUXOK
DOV
7

(IAF) GLUME
DOV
13

(IF) WEFIT
DOV
13

RADAR required for holding above 4000 or > 230 KIAS

RADAR required for holding above 4000 or > 230 KIAS

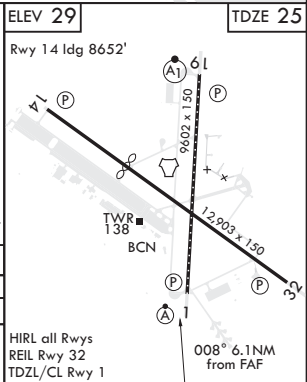
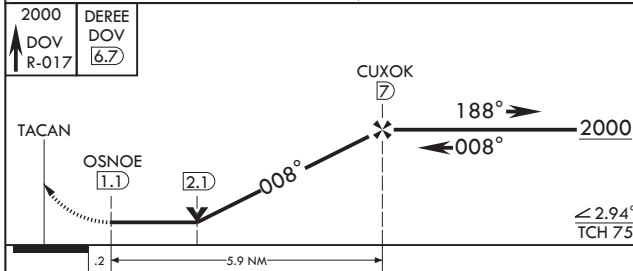
RADAR required for holding above 4000 or > 230 KIAS

MSA DOV 25 NM

1700

WATERLOO

EMERG SAFE ALT 100 NM 4300



CATEGORY	A	B	C	D	E
S-1*	480/24	455 (500-1/2)	480/45	455	(500-3/8)
CIRCLING	500-1 471 (500-1)	540-1 511 (600-1)	580-1 1/2 551 (600-1 1/2)	620-2 591 (600-2)	1080-3 1051 (1100-3)

HIRL all Rwys
REIL Rwy 32
TDZL/CL Rwy 1

DOVER, DELAWARE
Amdt 2 05DEC19

39°08'N - 75°28'W

DOVER AFB (KDOV)

TACAN RWY 1

NE-3, 08 OCT 2020 to 05 NOV 2020

NE-3, 08 OCT 2020 to 05 NOV 2020