

BLUEGRASS FOUR DEPARTURE

AL-655 (FAA)

COVINGTON, KENTUCKY

D-ATIS DEP 135.3

CLNC DEL

127.175

GND CON

121.7

CINCINNATI TOWER

118.3 360.85 (RWYS 18C/36C, 9/27)

118.975 360.85 (RWY 18L/36R)

133.325 360.85 (RWY 18R/36L)

CINCINNATI DEP CON

126.65 254.25 (001°-180°)

128.7 254.25 (181°-360°)

TOP ALTITUDE:
(JETS) 6000/(PROPS) 4000

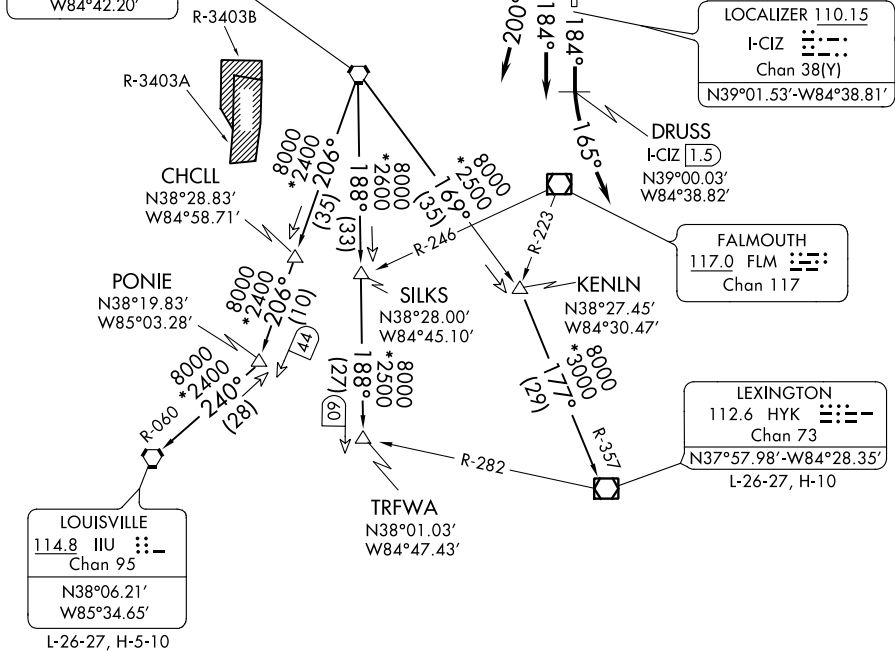
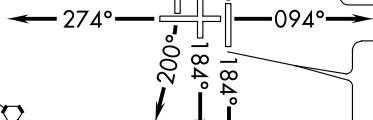
CINCINNATI
117.3 CVG
Chan 120
N39°00.96'
W84°42.20'

LOCALIZER 110.75
I-VAC
Chan 44 (Y)
N39°04.42'-W84°41.08'

NICID
I-CVG [0.6]
N39°04.69'
W84°40.11'

LOCALIZER 109.9
I-CVG
Chan 36
N39°04.06'-W84°40.12'

LOCALIZER 110.15
I-CIZ
Chan 38(Y)
N39°01.53'-W84°38.81'



SE-1, 08 OCT 2020 to 05 NOV 2020

SE-1, 08 OCT 2020 to 05 NOV 2020

TAKEOFF MINIMUMS

Rwys 9, 18L/C/R, 27, 36L/C/R: Standard.

NOTE: DME required Rwy 18L/36L/36C.

NOTE: DME required for Louisville transition.

NOTE: RADAR required.

NOTE: TURBOJETS accelerate to 250K until reaching 10000 MSL, if unable, advise ATC.

(NARRATIVE ON FOLLOWING PAGE)

NOTE: Chart not to scale.

BLUEGRASS FOUR DEPARTURE