

| | | |
|--|------------------------|--|
| LOC/DME I-SIC 111.55 Chan 52 (Y) | APP CRS 186° | Rwy Idg 11000 TDZE 875 Apt Elev 896 |
|--|------------------------|--|

ILS or LOC RWY 18C

CINCINNATI/NORTHERN KENTUCKY INTL (CVG)

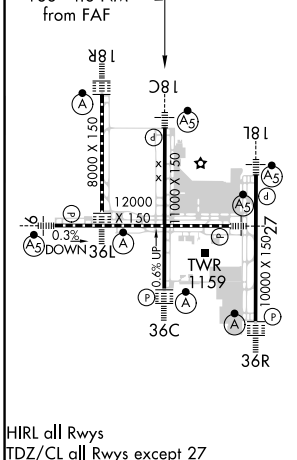
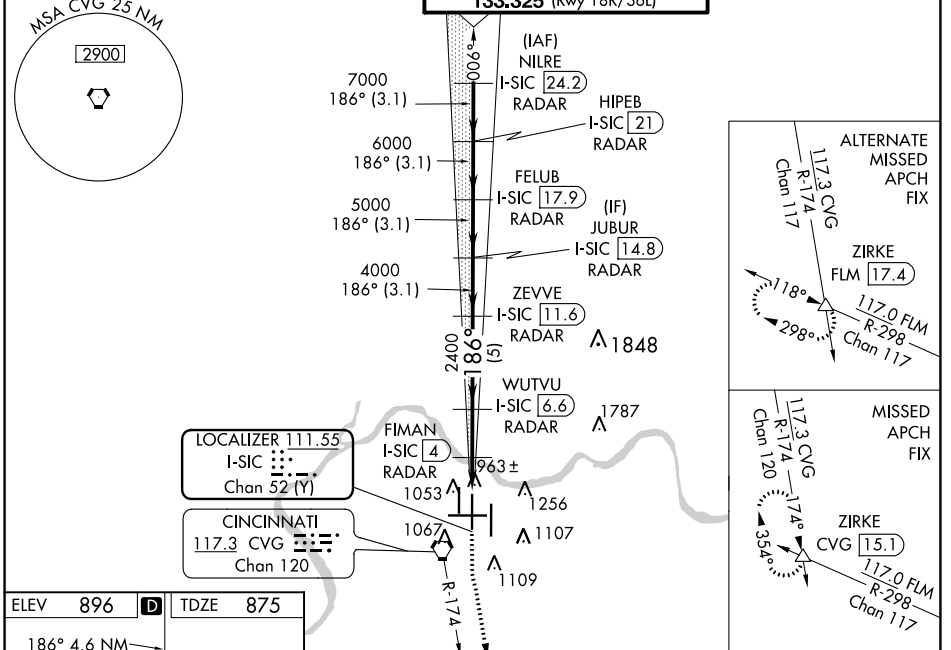
RADAR required for procedure entry.
DME or RADAR required.

MALSRL

MISSED APPROACH: Climb to 1500 then climbing left turn to 3000 on CVG R-174 to ZIRKE INT/CVG 15.1 DME and hold.

Simultaneous approach authorized.

| | | | | |
|---|--|--|-------------------------|----------------------------|
| D-ATIS ARR 134.375 DEP 135.3 | CINCINNATI APP CON 119.7 363.15 (090°-269°) 123.875 363.15 (270°-089°) | CINCINNATI TOWER 118.95 360.85 (Rwy 18L/36R) 118.3 (Rwys 18C/36C, 09/27) 133.325 (Rwy 18R/36L) | GND CON 121.7 | CLNC DEL 127.175 |
|---|--|--|-------------------------|----------------------------|



| | | | | |
|---|------------------------|--------------------------|--------------------------|--------------------------|
| VGS1 and ILS glidepath not coincident (VGS1 Angle 3.00/TCH 68). | | 1500 | 3000 | ZIRKE |
| | | ↑ | ↶ | △ |
| | | * LOC only | | |
| NILRE I-SIC [24.2] RADAR | HIPEB I-SIC [21] RADAR | FELUB I-SIC [17.9] RADAR | JUBUR I-SIC [14.8] RADAR | ZEVVE I-SIC [11.6] RADAR |
| 8000 7800 7000 6000 5000 4000 3000 2400 1560 1500 | | FIMAN I-SIC [4] RADAR | | |
| | | * I-SIC [3] I-SIC [2] | | |
| CATEGORY | A | B | C | D |
| S-ILS 18C | 1075/18 200 (200-½) | | | |
| S-LOC 18C | 1260/24 385 (400-½) | 1260/35 385 (400-¾) | | |
| CIRCLING | 1460-1 564 (600-1) | 1560-1¾ 664 (700-1¾) | 1560-2 664 (700-2) | |

SE-1, 08 OCT 2020 to 05 NOV 2020

SE-1, 08 OCT 2020 to 05 NOV 2020