


LOC/DME I-CIZ 110.15 Chan 38 (Y)	APP CRS 184°	Rwy Idg TDZE 889 Apt Elev 896
--	------------------------	---

ILS or LOC RWY 18L

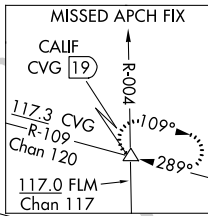
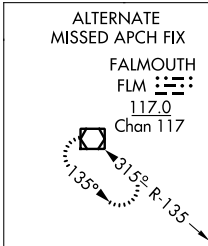
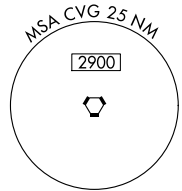
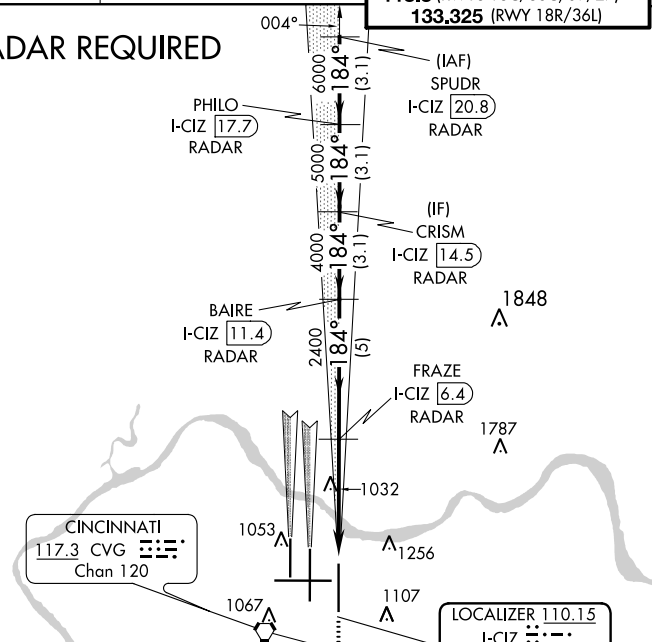
CINCINNATI/NORTHERN KENTUCKY INTL (CVG)

⚠ Simultaneous approach authorized with Rwy 18C and 18R.
⚠ DME or radar required. For inoperative MALS, increase S-LOC 18L Cat C and D visibility to RVR 6000.

MALS 
MISSED APPROACH: Climb to 1500 then climbing left turn to 3000 via CVG R-109 to CALIF INT/CVG 19 DME and hold.

D-ATIS ARR 134.375 DEP 135.3	CINCINNATI APP CON 119.7 363.15 (090°-269°) 123.875 363.15 (270°-089°)	CINCINNATI TOWER 118.975 360.85 (RWY 18L/36R) 118.3 (RWYS 18C/36C, 09/27) 133.325 (RWY 18R/36L)	GND CON 121.7	CLNC DEL 127.175
---	--	---	-------------------------	----------------------------

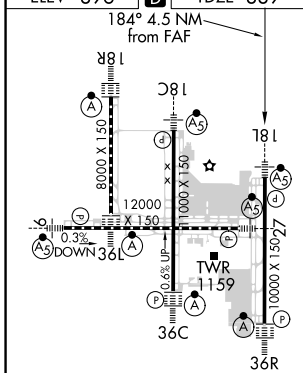
RADAR REQUIRED



SE-1, 08 OCT 2020 to 05 NOV 2020

SE-1, 08 OCT 2020 to 05 NOV 2020

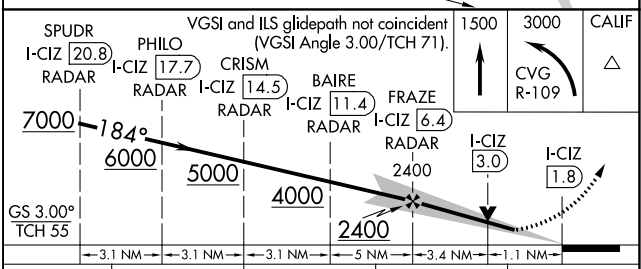
ELEV 896	D	TDZE 889
----------	----------	----------



HIRL all Rws
TDZ/CL all Rws except 27

FAF to MAP 4.5 NM

Knots	60	90	120	150	180
Min:Sec	4:30	3:00	2:15	1:48	1:30



CATEGORY	A	B	C	D
S-ILS 18L	1089/18 200 (200-½)			
S-LOC 18L	1300/24	411 (500-½)	1300/40	411 (500-¾)
CIRCLING	1460-1	564 (600-1)	1460-1½ 564 (600-½)	1560-2 664 (700-2)