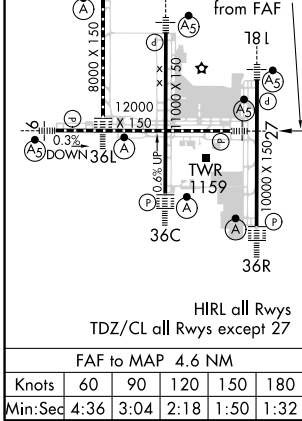


LOC I-JDP <b>108.7</b>	APP CRS <b>276°</b>	Rwy Idg <b>12000</b>
		TDZE <b>875</b>
		Apt Elev <b>896</b>

# ILS or LOC RWY 27

## CINCINNATI/NORTHERN KENTUCKY INTL (CVG)

RADAR required for procedure entry.		MALSR 	MISSED APPROACH: Climb to 2000 then climbing left turn to 3000 on heading 230° and CVG R-244 to AVIEW INT/CVG 20 DME and hold.	
<b>** RVR 1800 authorized with use of FD or AP or HUD to DA.</b>				
D-ATIS ARR <b>134.375</b>	DEP <b>135.3</b>	CINCINNATI APP CON <b>119.7 363.15</b> (090°-269°) <b>123.875 363.15</b> (270°-089°)	CINCINNATI TOWER <b>118.975 360.85</b> (Rwy 18L/36R) <b>118.3</b> (Rwys 18C/36C, 09/27) <b>133.325</b> (Rwy 18R/36L)	GND CON <b>121.7</b>
				CLNC DEL <b>127.175</b>



ELEV 896	TDZE 875	2000 3000 hdg 230° CVG R-244 AVIEW INT CVG 20		VGSI and ILS glidepath not coincident (VGSI Angle 3.00°/TCH 67). KAYDE INT RADAR 5000 GS 3.00° TCH 55
SOAND INT RADAR 2400 JELDA INT RADAR 3500 4.6 NM 3.5 NM 4.7 NM				
CATEGORY	A	B	C	D
S-ILS 27 **	1075/24 200 (200-½)			
S-LOC 27	1420/24	545 (600-½)	1420/60	545 (600-1¼)
<input checked="" type="checkbox"/> CIRCLING	1460-1	564 (600-1)	1560-1¾ 664 (700-1¼)	1560-2 664 (700-2)

SE-1, 08 OCT 2020 to 05 NOV 2020

SE-1, 08 OCT 2020 to 05 NOV 2020