

LOC/DME I-CVG 109.9 Chan 36	APP CRS 006°	Rwy Idg 11000 TDZE 851 Apt Elev 896
--	------------------------	--

ILS or LOC RWY 36C

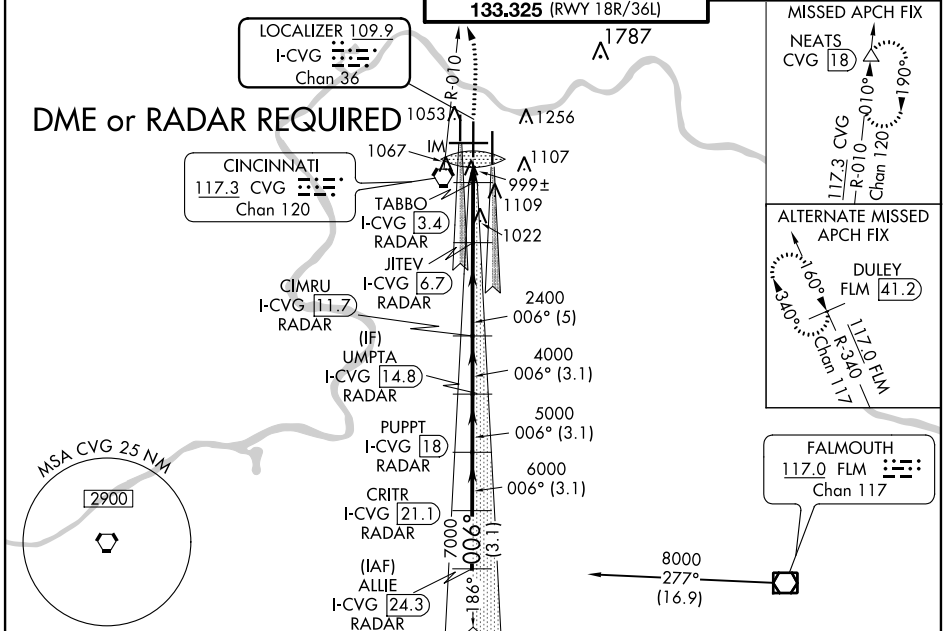
CINCINNATI/NORTHERN KENTUCKY INTL (CVG)

Simultaneous approach authorized with Rwy 36L/R. DME required.

ALSIF-2

MISSED APPROACH: Climb to 1500 then climbing left turn to 3000 via CVG R-010 to NEATS/CVG 18 DME and hold.

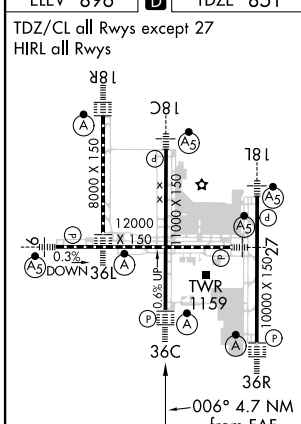
D-ATIS ARR 134.375 DEP 135.3	CINCINNATI APP CON 119.7 363.15 (090°-269°) 123.875 363.15 (270°-089°)	CINCINNATI TOWER 118.975 360.85 (RWY 18L/36R) 118.3 (RWYS 18C/36C, 09/27) 133.325 (RWY 18R/36L)	GND CON 121.7	CLNC DEL 127.175
--	--	---	-------------------------	----------------------------



SE-1, 08 OCT 2020 to 05 NOV 2020

SE-1, 08 OCT 2020 to 05 NOV 2020

ELEV 896 **D** TDZE 851



1500 3000 NEATS

CVG R-010

VGSI and ILS glidepath not coincident (VGSI Angle 3.00/TCH 77).

CIMRU I-CVG 11.7 PUPPT I-CVG 18 CRITR I-CVG 21.1

RADAR RADAR RADAR

JITEV I-CVG 6.7

TABBO I-CVG 3.4

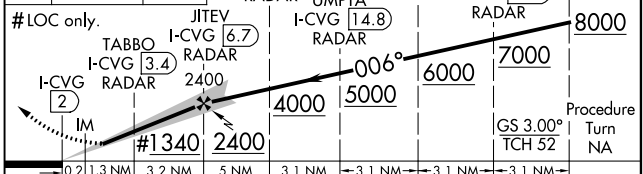
I-CVG 14.8 UMPA I-CVG 18 CRITR I-CVG 21.1

RADAR RADAR RADAR

8000

Procedure Turn NA

GS 3.00° TCH 52



FAF to MAP 4.7 NM

Knots	60	90	120	150	180
Min:Sec	4:42	3:08	2:21	1:53	1:34

CATEGORY	A	B	C	D
S-ILS 36C	1051/18 200 (200-1/2)			
S-LOC 36C	1340/24	489 (500-1/2)	1340/50	489 (500-1)
CIRCLING	1460-1	564 (600-1)	1460-1 1/2 564 (600-1 1/2)	1560-2 664 (700-2)
TABBO FIX MINIMUMS				
S-LOC 36C	1260/24	409 (400-1/2)	1260/40	409 (400-3/4)
CIRCLING	1460-1	564 (600-1)	1460-1 1/2 564 (600-1 1/2)	1560-2 664 (700-2)