

LOC/DME I-VAC 110.75 Chan 44 (Y)	APP CRS 006°	Rwy Idg 8000	TDZE 873
		Apt Elev 896	

ILS or LOC RWY 36L

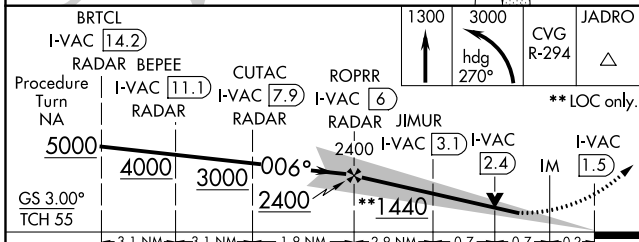
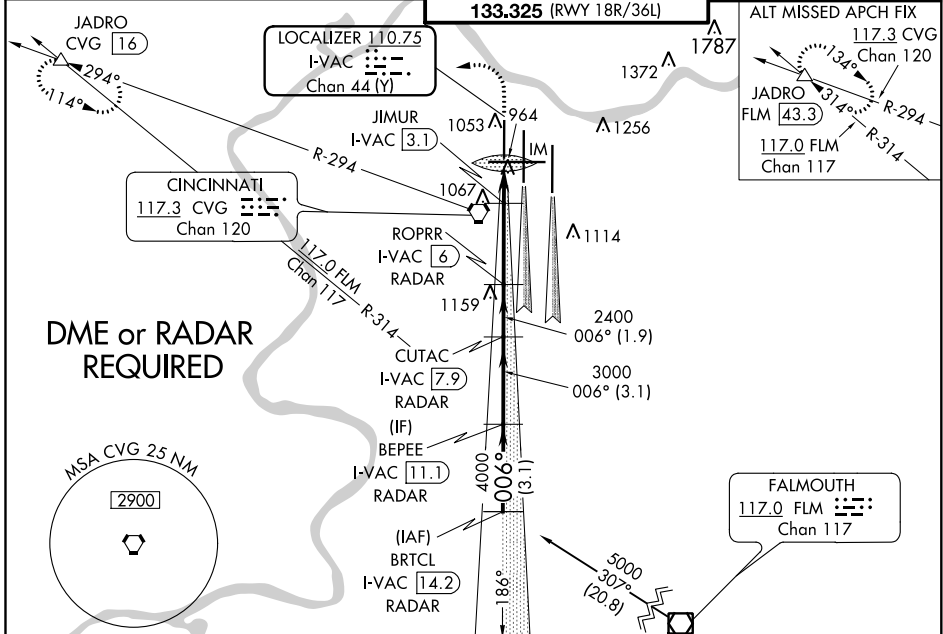
CINCINNATI/NORTHERN KENTUCKY INTL (CVG)

Simultaneous approach authorized with Rwy 36C and 36R. DME required.

ALSIF-2

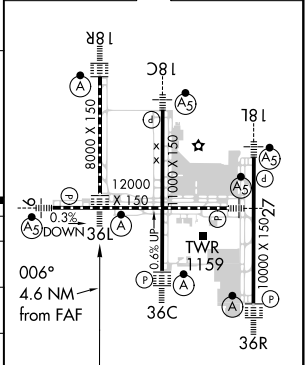
MISSED APPROACH: Climb to 3000 then climbing left turn to 3000 via heading 270° and CVG R-294 to JADRO/CVG 16 DME and hold.

D-ATIS ARR 134.375 DEP 135.3	CINCINNATI APP CON 119.7 363.15 (090°-269°) 123.875 363.15 (270°-089°)	CINCINNATI TOWER 118.975 360.85 (RWY 18L/36R) 118.3 (RWYS 18C/36C, 09/27) 133.325 (RWY 18R/36L)	GND CON 121.7	CLNC DEL 127.175
---	--	---	-------------------------	----------------------------



BRTCL	1300	3000	CVG	JADRO	ELEV	896	TDZE	873
I-VAC 14.2		hdg 270°	R-294	△				

Procedure Turn NA	I-VAC 11.1	I-VAC 7.9	I-VAC 6	I-VAC 3.1	I-VAC 2.4	I-VAC 1.5	**LOC only.
GS 3.00°	4000	3000	2400	2400	2400	2400	
TCH 55	3.1 NM	3.1 NM	1.9 NM	2.9 NM	0.7 NM	0.2 NM	



CATEGORY	A	B	C	D
S-ILS 36L	1073/18 200 (200-½)			
S-LOC 36L	1440/24	567 (600-½)	1440/60	567 (600-1¼)
CIRCLING	1460-1	564 (600-1)	1460-1½ 564 (600-1½)	1560-2 664 (700-2)
JIMUR FIX MINIMUMS				
S-LOC 36L	1220/24	347 (400-½)	1220/30	347 (400-¾)
CIRCLING	1460-1	564 (600-1)	1460-1½ 564 (600-1½)	1560-2 664 (700-2)

HRL all Rwys TDZ/CL all Rwys except 27					
FAF to MAP 4.6 NM					
Knots	60	90	120	150	180
Min:Seq	4:36	3:04	2:18	1:50	1:32

SE-1, 08 OCT 2020 to 05 NOV 2020

SE-1, 08 OCT 2020 to 05 NOV 2020