

LOC/DME I-URN 111.9 Chan 56	APP CRS 094°	Rwy Idg 11640 TDZE 883 Apt Elev 896
---	------------------------	--

ILS or LOC RWY 9

CINCINNATI/NORTHERN KENTUCKY INTL (CVG)

⚠ For inoperative MALSR, increase S-LOC 9 Cat D visibility to RVR 5000. DME or radar required.

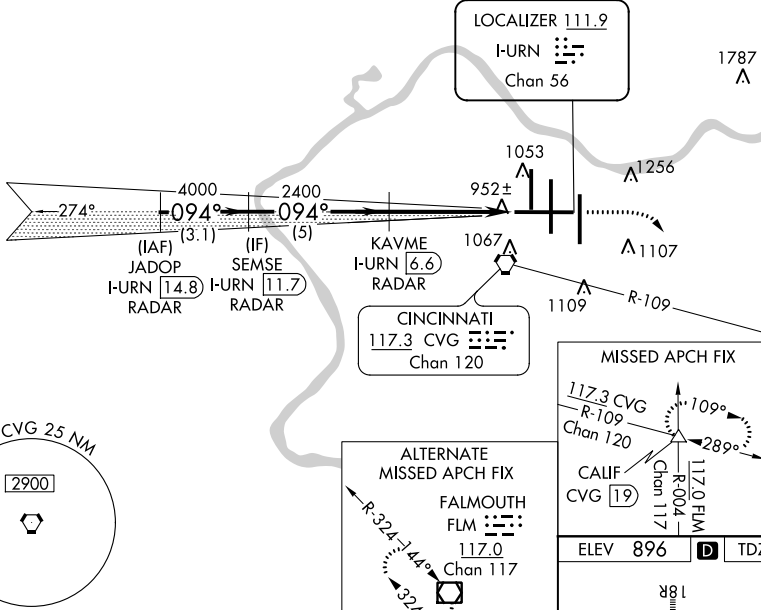


MISSED APPROACH: Climb to 2000 then climbing right turn to 3000 via heading 140° and CVG R-109 to CALIF INT/19 DME and hold.

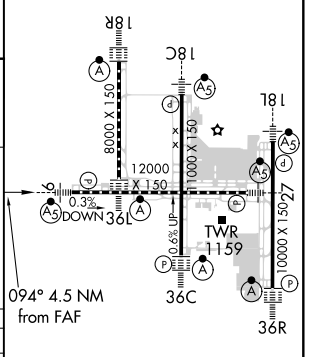
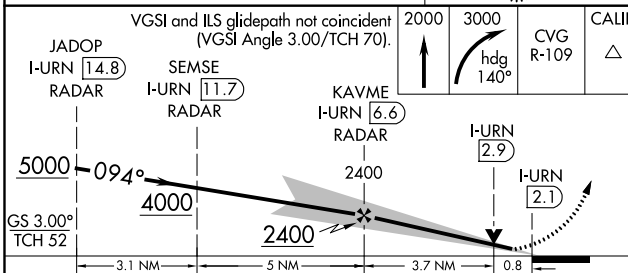
D-ATIS ARR 134.375 DEP 135.3	CINCINNATI APP CON 119.7 363.15 (090°-269°) 123.875 363.15 (270°-089°)	CINCINNATI TOWER 118.975 360.85 (RWY 18L/36R) 118.3 (RWYS 18C/36C, 09/27) 133.325 (RWY 18R/36L)	GND CON 121.7	CLNC DEL 127.175
---	--	---	-------------------------	----------------------------

RADAR REQUIRED

1848 Δ



ELEV 896	TDZE 883
----------	----------



CATEGORY	A	B	C	D
S-ILS 9	1083/18		200 (200-½)	
S-LOC 9	1220/24		337 (400-½)	
CIRCLING	1460-1	564 (600-1)	1460-1½	1560-2
			564 (600-1½)	664 (700-2)

FAF to MAP 4.5 NM					
Knots	60	90	120	150	180
Min:Sec	4:30	3:00	2:15	1:48	1:30

ILS or LOC RWY 9

SE-1, 08 OCT 2020 to 05 NOV 2020

SE-1, 08 OCT 2020 to 05 NOV 2020