

JAKIE FIVE ARRIVAL (RNAV)

D-ATIS ARR

134.375

CINCINNATI APP CON

119.7 254.25

ARRIVAL ROUTE DESCRIPTION

ARTUR TRANSITION (ARTUR.JAKIE5):

CUBIM TRANSITION (CUBIM.JAKIE5):

DOLLI TRANSITION (DOLLI.JAKIE5):

VOLUNTEER TRANSITION (VXV.JAKIE5):

From JAKIE on track 336° to FLM VOR/DME, then on track 317° to FIDEK, then on track 006° to BAMGE, then on track 006° to AGEBE.

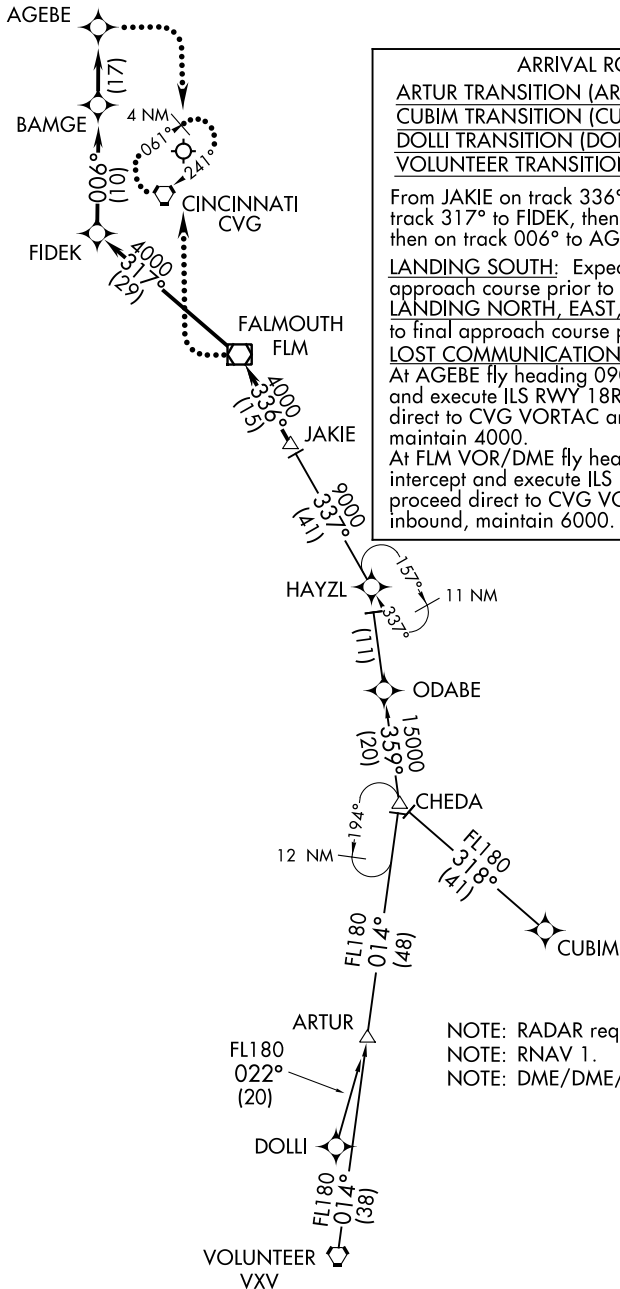
LANDING SOUTH: Expect RADAR vectors to final approach course prior to AGEBE.

LANDING NORTH, EAST, WEST: Expect RADAR vectors to final approach course prior to FIDEK.

LOST COMMUNICATIONS:

At AGEBE fly heading 090°, maintain 4000; intercept and execute ILS RWY 18R approach. If unable, proceed direct to CVG VORTAC and hold NE, RT, 241° inbound, maintain 4000.

At FLM VOR/DME fly heading 270°, maintain 6000; intercept and execute ILS RWY 36R approach. If unable, proceed direct to CVG VORTAC and hold NE, RT, 241° inbound, maintain 6000.



NOTE: RADAR required.
NOTE: RNAV 1.
NOTE: DME/DME/IRU or GPS required.

NOTE: Chart not to scale.

JAKIE FIVE ARRIVAL (RNAV)

SE-1, 08 OCT 2020 to 05 NOV 2020

SE-1, 08 OCT 2020 to 05 NOV 2020