

APP CRS	Rwy Idg	<b>11000</b>
<b>184°</b>	TDZE	<b>875</b>
	Apt Elev	<b>896</b>

# RNAV (RNP) Z RWY 18C

CINCINNATI/NORTHERN KENTUCKY INTL (CVG)

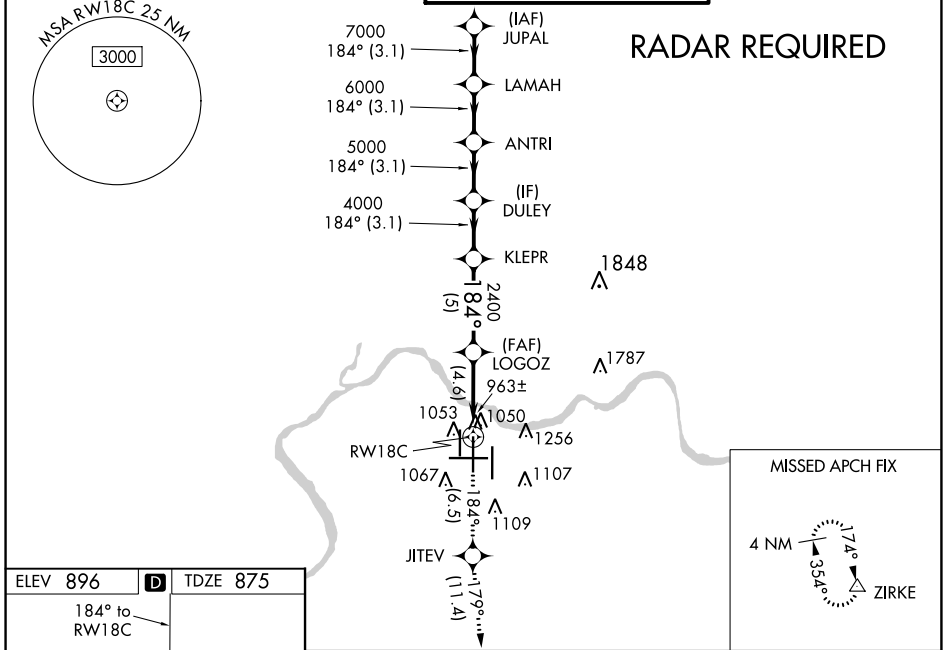
**NA** GPS Required. For uncompensated Baro-VNAV systems, procedure NA below -16°C (4°F) or above 47°C (116°F). For inoperative SSALR, increase RNP 0.15 visibility to 1½, RNP 0.30 visibility to 1¾. Simultaneous approach authorized with Rwy 18L/R. Use of FD or AP providing RNAV track guidance required during simultaneous operations.

MALSR

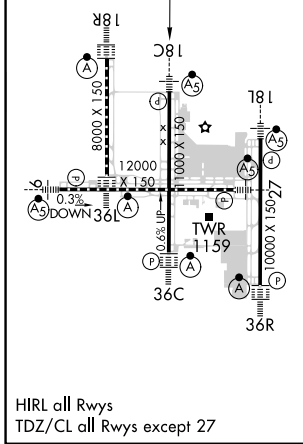


MISSED APPROACH: Climb to 3000 via 184° track to JITEV and via 179° track to ZIRKE and hold.

D-ATIS ARR <b>134.375</b> DEP <b>135.3</b>	CINCINNATI APP CON <b>119.7 363.15</b> (090°- 269°) <b>123.875 363.15</b> (270°- 089°)	CINCINNATI TOWER <b>118.975 360.85</b> (RWY 18L/36R) <b>118.3</b> (RWYS 18C/36C, 09/27) <b>133.325</b> (RWY 18R/36L)	GND CON <b>121.7</b>	CLNC DEL <b>127.175</b>
---	--	---	-------------------------	----------------------------

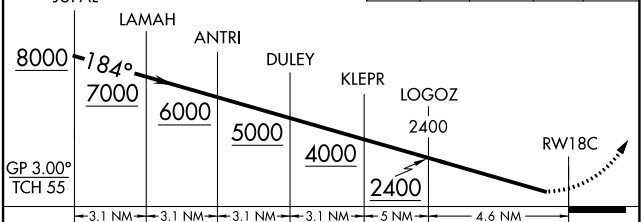


ELEV <b>896</b>	<b>D</b>	TDZE <b>875</b>
-----------------	----------	-----------------



VGSI and RNAV glidepath not coincident (VGSI Angle 3.00/TCH 68).

3000	tr 184°	JITEV	tr 179°	ZIRKE
------	---------	-------	---------	-------



CATEGORY	A	B	C	D
RNP 0.15 DA	1321/50		446 (500-1)	
RNP 0.30 DA	1389/60		514 (600-1¼)	

**AUTHORIZATION REQUIRED**

SE-1, 08 OCT 2020 to 05 NOV 2020

SE-1, 08 OCT 2020 to 05 NOV 2020