


APP CRS	Rwy Idg	10000
184°	TDZE	889
	Apt Elev	896

RNAV (RNP) Z RWY 18L

CINCINNATI/NORTHERN KENTUCKY INTL (CVG)

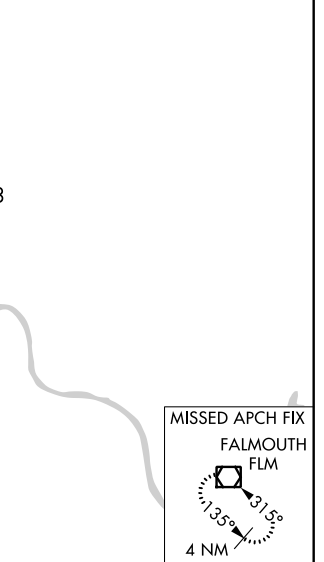
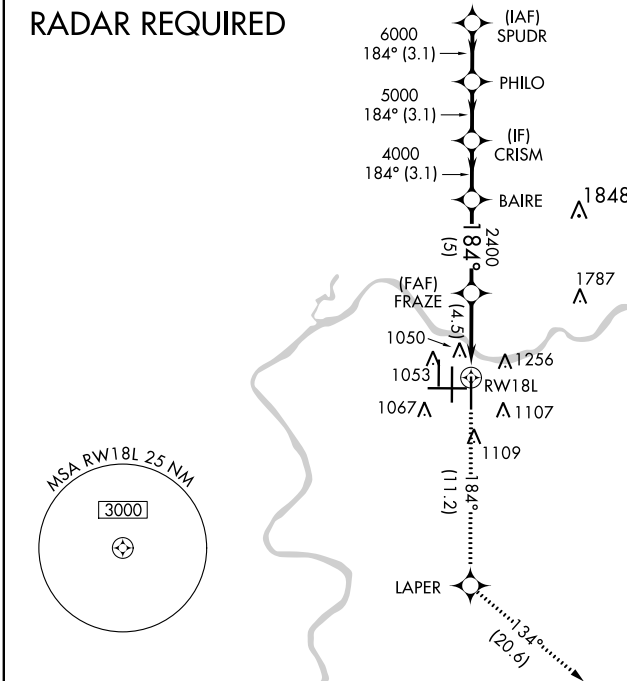
▽ For uncompensated Baro-VNAV systems, procedure NA below -16°C (4°F) or above 47°C (116°F). For inoperative MALS/R, increase RNP 0.21 and RNP 0.25 visibility to RVR 6000, RNP 0.30 visibility to 2. GPS Required. Simultaneous approach authorized with Rwy 18C/R. Use of FD or AP providing RNAV track guidance required during simultaneous operations.

MALSR
 MISSED APPROACH: Climb to 3000 via 184° track to LAPER and via 134° track to FLM VOR/DME and hold.

D-ATIS	CINCINNATI APP CON
ARR 134.375 DEP 135.3	119.7 363.15 (090°-269°) 123.875 363.15 (270°-089°)

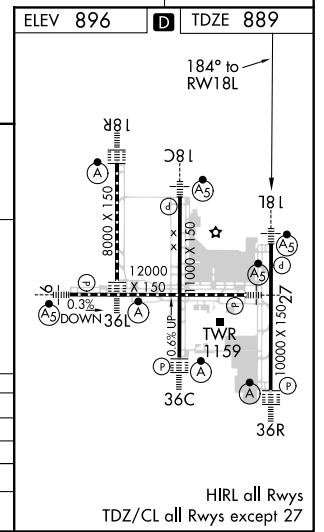
CINCINNATI TOWER
118.975 360.85 (RWY 18L/36R) 118.3 (RWYS 18C/36C, 09/27) 133.325 (RWY 18R/36L)

GND CON	CLNC DEL
121.7	127.175



VGSI and RNAV glidepath not coincident (VGSI Angle 3.00°/TCH 71).

SPUDR	PHILO	CRISM	BAIRE	FRAZE	RWY 18L	FLM
7000	6000	5000	4000	2400		
GP 3.00°						
TCH 55						
	3.1 NM	3.1 NM	3.1 NM	5 NM	4.5 NM	
CATEGORY	A		B		C	D
RNP 0.21 DA			1272/40	383 (400-¾)		
RNP 0.25 DA			1283/50	394 (400-1)		
RNP 0.30 DA			1472-1½	583 (600-1½)		



AUTHORIZATION REQUIRED

SE-1, 08 OCT 2020 to 05 NOV 2020

SE-1, 08 OCT 2020 to 05 NOV 2020

HIRL all Rwys
 TDZ/CL all Rwys except 27