

APP CRS	Rwy Idg	11000
004°	TDZE	851
	Apt Elev	896

RNAV (RNP) Z RWY 36C

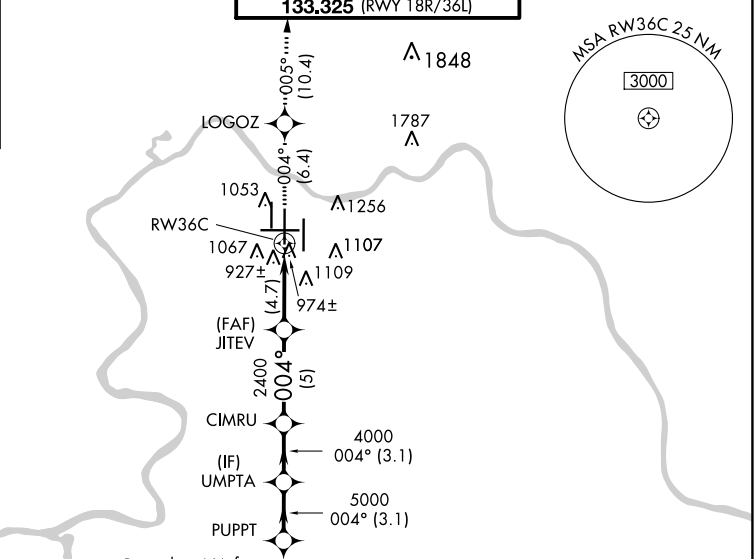
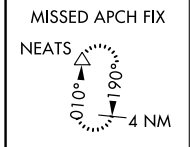
CINCINNATI/NORTHERN KENTUCKY INTL (CVG)

⚠ NA For uncompensated Baro-VNAV systems, Procedure NA below -16°C (4°F) or above 47°C (116°F). For inoperative ALSF, increase RNP 0.24 visibility to 1½, RNP 0.30 visibility 1¾. GPS required. Simultaneous approach authorized with Rwy 36L/R. Use of FD or AP providing RNAV track guidance required during simultaneous operations.

ALSF-2

MISSED APPROACH: Climb to 3000 via 004° track to LOGOZ and via 005° track to NEATS and hold.

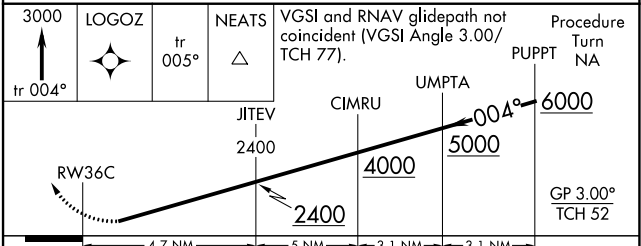
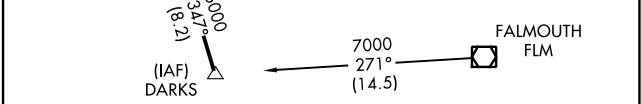
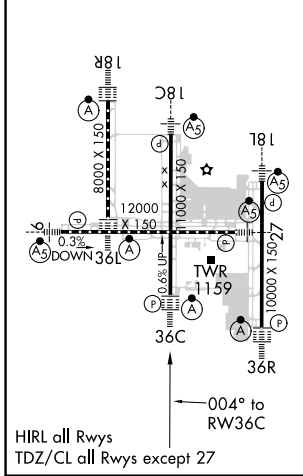
D-ATIS	CINCINNATI APP CON	CINCINNATI TOWER	GND CON	CLNC DEL
ARR 134.375 DEP 135.3	119.7 363.15 (090°-269°) 123.875 363.15 (270°-089°)	118.975 360.85 (RWY 18L/36R) 118.3 (RWYS 18C/36C, 09/27) 133.325 (RWY 18R/36L)	121.7	127.175



ELEV 896	D	TDZE 851
-----------------	----------	-----------------

Procedure NA for arrivals at DARKS via V97 southbound.

Procedure NA for arrivals at FLM VOR/DME via V517 southeast bound.



CATEGORY	A	B	C	D
RNP 0.24 DA	1295/50 444 (400-1)			
RNP 0.30 DA	1318/60 467 (500-1¼)			

AUTHORIZATION REQUIRED

SE-1, 08 OCT 2020 to 05 NOV 2020

SE-1, 08 OCT 2020 to 05 NOV 2020