

RNAV (RNP) Z RWY 36L

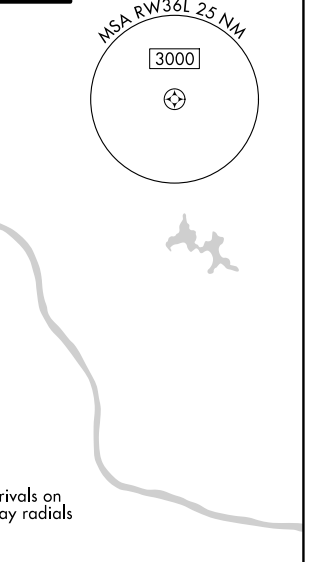
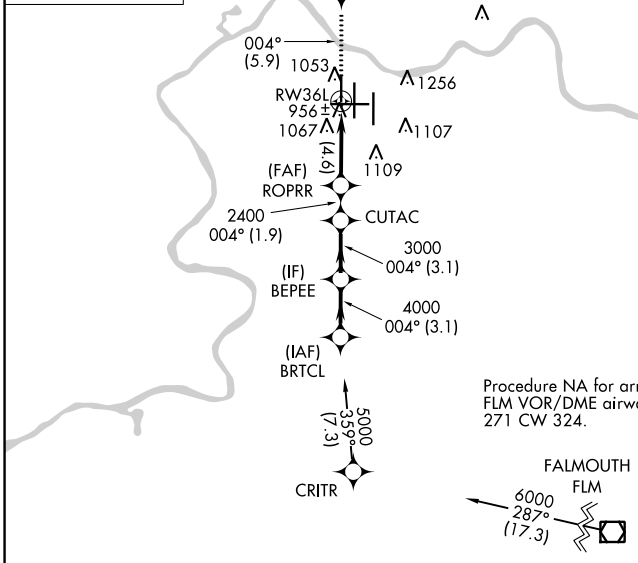
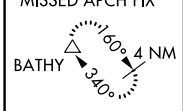
CINCINNATI/NORTHERN KENTUCKY INTL (CVG)

APP CRS 004°	Rwy Idg 8000
	TDZE 873
	Apt Elev 896

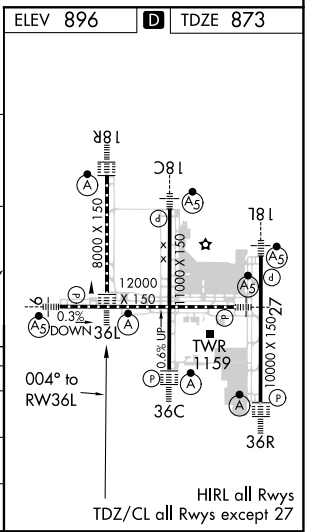
NA GPS Required. For uncompensated Baro-VNAV systems, procedure NA below -16°C (4°F) or above 47°C (116°F). For inoperative ALSF, increase RNP 0.29 and RNP 0.30 visibility to RVR 6000. Simultaneous approach authorized with Rwy 36C/R. Use of FD or AP providing RNAV track guidance required during simultaneous operations.

ALSF-2 MISSED APPROACH: Climb to 3000 via 004° track to KRTHY and via 327° track to BATHY and hold.

D-ATIS ARR 134.375 DEP 135.3	CINCINNATI APP CON 119.7 363.15 (090°-269°) 123.875 363.15 (270°-089°)	CINCINNATI TOWER 118.975 360.85 (RWY 18L/36R) 118.3 (RWYS 18C/36C, 09/27) 133.325 (RWY 18R/36L)	GND CON 121.7	CLNC DEL 127.175
---	--	---	-------------------------	----------------------------



BRTCL	5000	BEPEE	4000	CUTAC	3000	ROPRR	2400	RWY 36L
	3000		tr 004°		KRTHY		tr 327°	
Procedure Turn NA								
GP 3.00° TCH 55								
CATEGORY	A	B	C	D				
RNP 0.29 DA		1261/40	388 (400-¾)					
RNP 0.30 DA		1264/50	391 (400-1)					



SE-1, 08 OCT 2020 to 05 NOV 2020

SE-1, 08 OCT 2020 to 05 NOV 2020

AUTHORIZATION REQUIRED

HIRL all Rwys
TDZ/CL all Rwys except 27