


APP CRS	Rwy Idg	<b>10000</b>
<b>004°</b>	TDZE	<b>896</b>
	Apt Elev	<b>896</b>

# RNAV (RNP) Z RWY 36R

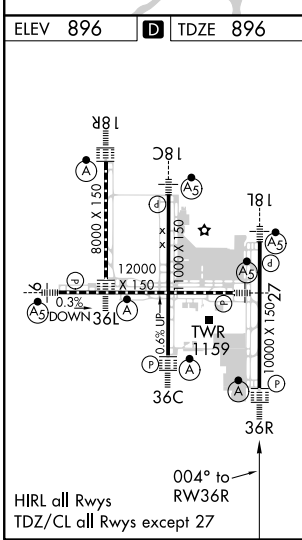
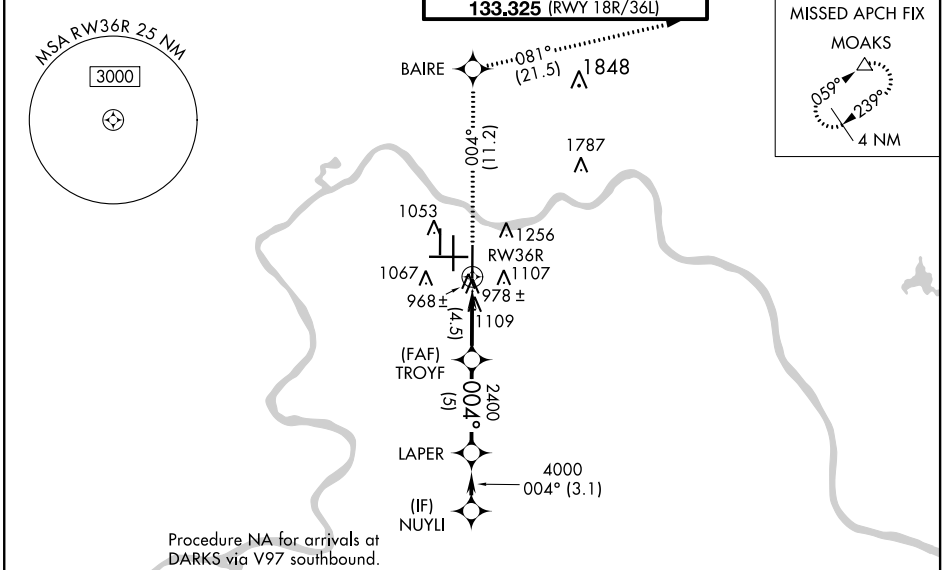
CINCINNATI/NORTHERN KENTUCKY INTL (CVG)

**V** GPS Required. For uncompensated Baro-VNAV systems, procedure NA below NA-16°C (4°F) or above 47°C (116°F). For inoperative ALSF, increase RNP 0.16 and RNP 0.20 visibility to RVR 6000, RNP 0.30 visibility to 1½. Simultaneous approach authorized with Rwy 36L/C. Use of FD or AP providing RNAV track guidance required during simultaneous operations.

ALSF-2 

MISSED APPROACH: Climb to 3000 via 004° track to BAIRE and via 081° track to MOAKS and hold.

D-ATIS	CINCINNATI APP CON	CINCINNATI TOWER	GND CON	CLNC DEL
ARR <b>134.375</b> DEP <b>135.3</b>	<b>119.7 363.15</b> (090°-269°) <b>123.875 363.15</b> (270°-089°)	<b>118.975 360.85</b> (RWY 18L/36R) <b>118.3</b> (RWYS 18C/36C, 09/27) <b>133.325</b> (RWY 18R/36L)	<b>121.7</b>	<b>127.175</b>



3000	↑	tr 004°	BAIRE	tr 081°	MOAKS	VGSI and RNAV glidepath not coincident (VGSI Angle 3.00°/TCH 70). NUYLI
			TROYF		LAPER	
			2400		5000	Procedure Turn NA
			4000		4000	GP 3.00° TCH 55
			4.5 NM	5 NM	3.1 NM	
CATEGORY	A	B	C	D		
RNP 0.16 DA		1284/40	388 (400-¾)			
RNP 0.20 DA		1295/50	399 (400-1)			
RNP 0.30 DA		1329/50	433 (500-1)			

SE-1, 08 OCT 2020 to 05 NOV 2020

SE-1, 08 OCT 2020 to 05 NOV 2020