

APP CRS	Rwy Idg	11640
094°	TDZE	883
	Apt Elev	896

RNAV (RNP) Z RWY 9

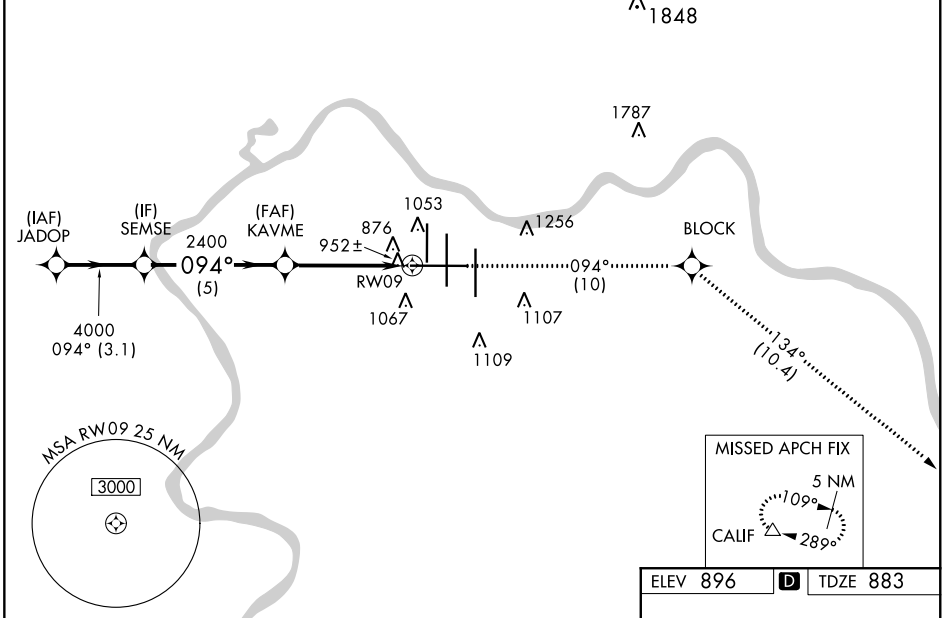
CINCINNATI/NORTHERN KENTUCKY INTL (CVG)

GPS Required. For uncompensated Baro-VNAV systems, procedure NA below -16° C (4° F) or above 47° C (116° F). For inoperative MALSR, increase RNP 0.18 visibility to RVR 5000, RNP 0.30 visibility to RVR 6000.

MALSR MISSED APPROACH: Climb to 3000 via 094° track to BLOCK and via 134° track to CALIF and hold.

D-ATIS	CINCINNATI APP CON	CINCINNATI TOWER	GND CON	CLNC DEL	
ARR	DEP				
134.375	135.3	119.7 363.15 (090°-269°) 123.875 363.15 (270°-089°)	118.975 360.85 (RWY 18L/36R) 118.3 (RWYS 18C/36C, 09/27) 133.325 (RWY 18R/36L)	121.7	127.175

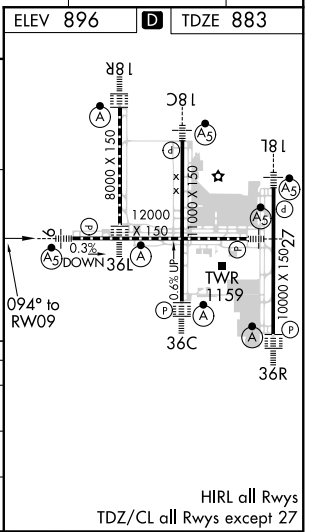
RADAR REQUIRED



SE-1, 08 OCT 2020 to 05 NOV 2020

SE-1, 08 OCT 2020 to 05 NOV 2020

VGSi and RNAV glidepath not coincident (VGSi Angle 3.00/TCH 70).				
3000	BLOCK	tr 134°	CALIF	
↑	⬠		△	
tr 094°				
JADOP	SEMSE	KAVME	RWY 09	
5000	4000	2400		
GP 3.00°		2400		
TCH 52				
	3.1 NM	5 NM	4.5 NM	
CATEGORY	A	B	C	D
RNP 0.18 DA	1199/24		316 (400-½)	
RNP 0.30 DA	1233/40		350 (400-¾)	
AUTHORIZATION REQUIRED				



HIRL all Rwys
TDZ/CL all Rwys except 27