

WAAS CH 86803 W18B	APP CRS 184°	Rwy Idg 11000 TDZE 875 Apt Elev 896
--	------------------------	--

RNAV (GPS) Y RWY 18C

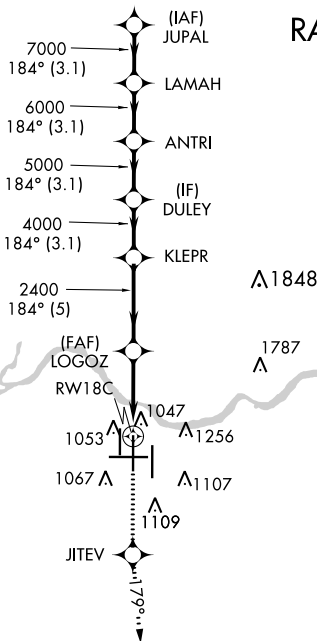
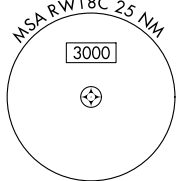
CINCINNATI/NORTHERN KENTUCKY INTL (CVG)

▼ For uncompensated Baro-VNAV systems, LNAV/VNAV NA below -16°C (4°F) or above 47°C (116°F). DME/DME RNP-0.3 NA. Simultaneous approach authorized with Rwy 18 L/R. LNAV procedure NA during simultaneous operations. Use of FD or AP providing RNAV track guidance required during simultaneous operations.

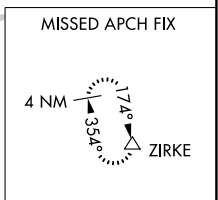


MISSED APPROACH: Climb to 3000 direct JITEV and on 179° track to ZIRKE and hold.

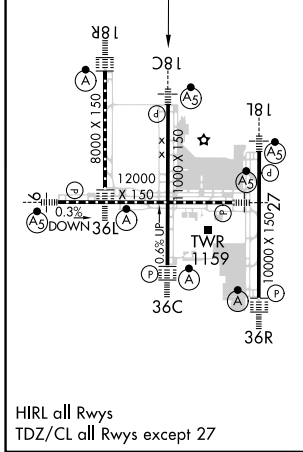
D-ATIS ARR 134.375 DEP 135.3	CINCINNATI APP CON 119.7 363.15 (090°-269°) 123.875 363.15 (270°-089°)	CINCINNATI TOWER 118.975 360.85 (RWY 18L/36R) 118.3 (RWYS 18C/36C, 09/27) 133.325 (RWY 18R/36L)	GND CON 121.7	CLNC DEL 127.175
---	--	---	-------------------------	----------------------------



RADAR REQUIRED



ELEV 896	D	TDZE 875
----------	----------	----------



JUPAL		VGSi and RNAV glidepath not coincident (VGSi Angle 3.00/TCH 68).		3000	JITEV	ZIRKE
LAMAH		ANTRI		↑	✦	△
8000	7000	6000	5000	4000	2400	*1.4 NM to RW18C
GP 3.00°		TCH 55		*NNAV only.		
-3.1 NM		-3.1 NM		-3.2 NM		-1.4 NM
CATEGORY	A	B	C	D		
LPV DA	1075/18		200 (200-½)			
LNAV/VNAV DA	1398/60		523 (600-1¼)			
LNAV MDA	1360/24	485 (500-½)		1360/40	485 (500-1)	
CIRCLING	1460-1	564 (600-1)		1460-1½	1560-2	
				564 (600-1½)	664 (700-2)	

SE-1, 08 OCT 2020 to 05 NOV 2020

SE-1, 08 OCT 2020 to 05 NOV 2020