

WAAS CH 40103 W18A	APP CRS 184°	Rwy Idg 10000 TDZE 889 Apt Elev 896
--	------------------------	--

RNAV (GPS) Y RWY 18L

CINCINNATI/NORTHERN KENTUCKY INTL (CVG)

⚠ For uncompensated Baro-VNAV systems, LNAV/VNAV NA below -16°C (4°F) or above 47°C (116°F). DME/DME RNP-0.3 NA. Simultaneous approach authorized with Rwy 18C/R. LNAV procedure NA during simultaneous operations. Use of FD or AP providing RNAV track guidance required during simultaneous operations.

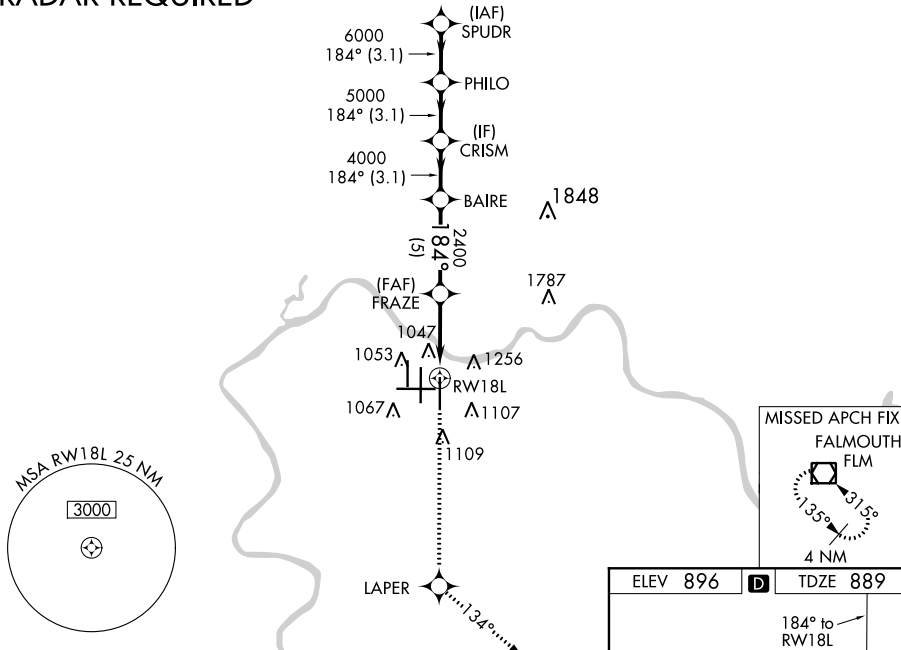
MALSR



MISSED APPROACH: Climb to 3000 direct LAPER and on 134° track to FLM VOR/DME and hold.

D-ATIS ARR 134.375 DEP 135.3	CINCINNATI APP CON 119.7 363.15 (090°-269°) 123.875 363.15 (270°-089°)	CINCINNATI TOWER 118.975 360.85 (RWY 18L/36R) 118.3 (RWYS 18C/36C, 09/27) 133.325 (RWY 18R/36L)	GND CON 121.7	CLNC DEL 127.175
---	--	---	-------------------------	----------------------------

RADAR REQUIRED



SE-1, 08 OCT 2020 to 05 NOV 2020

SE-1, 08 OCT 2020 to 05 NOV 2020

VGSi and RNAV glidepath not coincident (VGSi Angle 3.00/TCH 71).				
SPUDR	PHILO	CRISM	BAIRE	FRAZE
7000	6000	5000	4000	2400
GP 3.00° TCH 55				
	3.1 NM	3.1 NM	5 NM	3.3 NM
3000	LAPER	tr 134°	FLM	
*LNAV only. *1.3 NM to RWY 18L				
CATEGORY	A		B	
LPV DA	1089/18		200 (200-1/2)	
LNAV/VNAV DA	1395/60		506 (500-1/4)	
LNAV MDA	1360/24 471 (500-1/2)		1360/40 471 (500-3/4)	
CIRCLING	1460-1 564 (600-1)		1460-1/2 564 (600-1/2)	

