

| | | |
|--|------------------------|--|
| WAAS CH 86809 W27A | APP CRS 274° | Rwy Idg 12000 TDZE 875 Apt Elev 896 |
|--|------------------------|--|

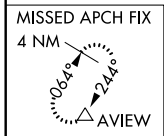
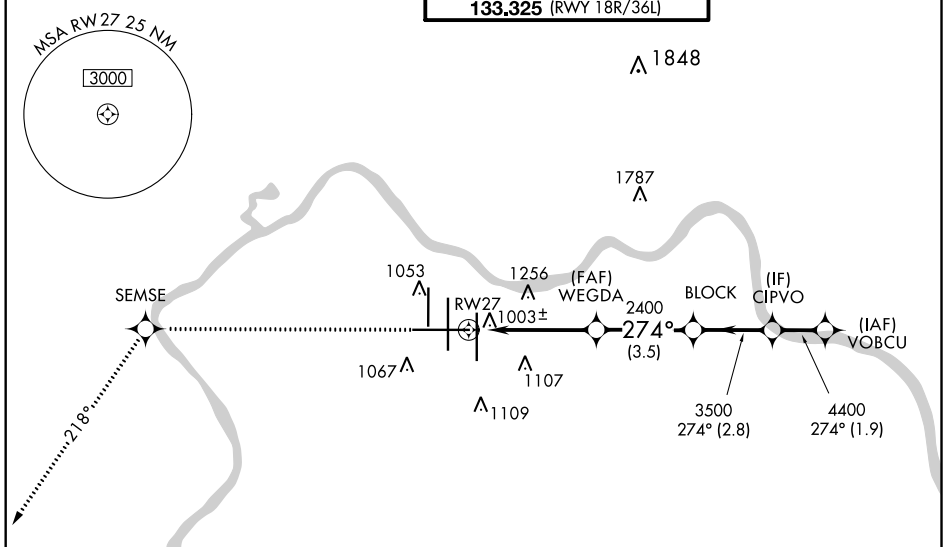
RNAV (GPS) Y RWY 27

CINCINNATI/NORTHERN KENTUCKY INTL (CVG)

▼ For uncompensated Baro-VNAV systems, LNAV/VNAV NA below -16° C (4° F) or above 47° C (116° F). DME/DME RNP-0.3 NA.
****RVR 1800 authorized with use of FD or AP or HUD to DA.**

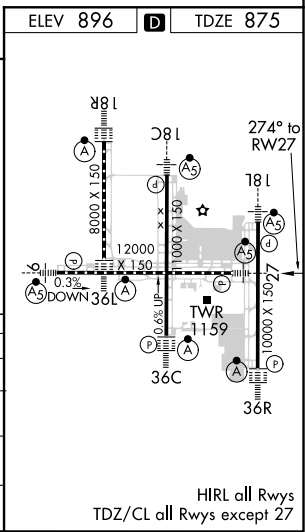
MALSR MISSED APPROACH: Climb to 3000 direct SEMSE then via 218° track to AVIEW and hold.

| | | | | |
|---|--|--|-------------------------|----------------------------|
| D-ATIS ARR 134.375 DEP 135.3 | CINCINNATI APP CON 119.7 363.15 (090°-269°) 123.875 363.15 (270°-089°) | CINCINNATI TOWER 118.975 360.85 (RWY 18L/36R) 118.3 (RWYS 18C/36C, 09/27) 133.325 (RWY 18R/36L) | GND CON 121.7 | CLNC DEL 127.175 |
|---|--|--|-------------------------|----------------------------|



RADAR REQUIRED

| | | | | | | | |
|--------------|-----------|---------|-------------|--------------|--------------|--------|--------------------|
| 3000 | SEMSE | tr 218° | AVIEW | | | | |
| *LNAV only. | | | | | | | |
| | | | | WEGDA | BLOCK | CIPVO | VOBCU |
| | | | | 2400 | 3500 | 274° | 5000 |
| | | | | 2400 | 4400 | | |
| | | | | 2400 | | | GP 3.00° TCH 55 |
| | | | | 1.5 | 3 NM | 3.5 NM | 2.8 NM |
| | | | | 1.9 NM | | | |
| CATEGORY | A | | | B | | C | D |
| LPV DA | **1075/24 | | | 200 (200-½) | | | |
| LNAV/VNAV DA | 1349/60 | | | 474 (500-1¼) | | | |
| LNAV MDA | 1420/24 | | 545 (600-½) | | 1420/60 | | 545 (600-1¼) |
| CIRCLING | 1460-1 | | 564 (600-1) | | 1460-1½ | | 1560-2 |
| | | | | | 564 (600-1½) | | 664 (700-2) |



SE-1, 08 OCT 2020 to 05 NOV 2020

SE-1, 08 OCT 2020 to 05 NOV 2020

HIRL all Rwy's
TDZ/CL all Rwy's except 27