

TACAN RWY 1

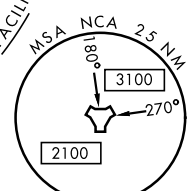
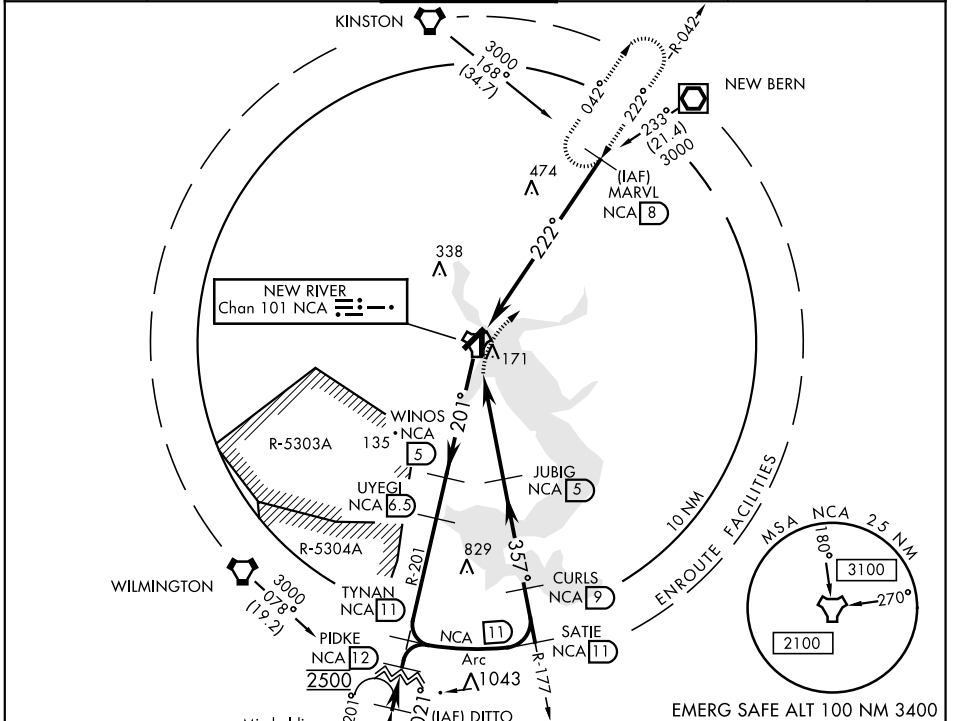
TACAN NCA Chan 101	APCH CRS 357°	Rwy ldg 4789
		TDZE 24
		Arprt Elev 26

AL-732 [USN] NEW RIVER MCAS (MC CUTCHEON FLD) (KNCA)

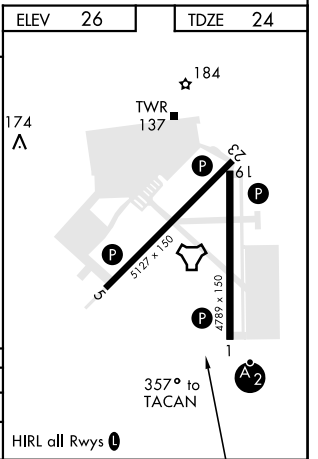
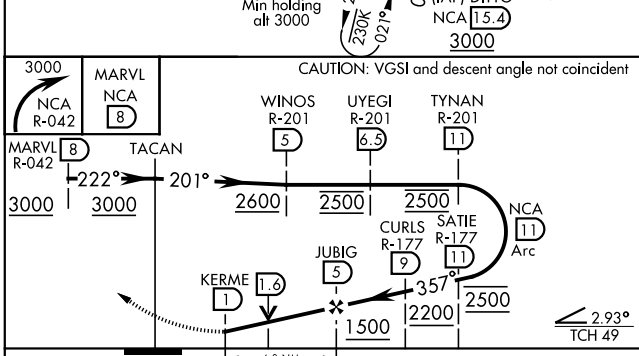
▼ * When ALS inop, increase vis CAT AB to 1 mile, CAT CD to 1/8 miles.

SALSF  MISSED APPROACH: Climbing right turn to 3000 direct MARVL (NCA R-042/ 8 DME) and hold. Continue climb-in-hold to 3000.

ATIS ★ 288.325	CHERRY POINT APP CON 119.35 377.175	NEW RIVER TOWER ★ 120.00★ 360.2	GND CON 121.8 254.275	CLNC DEL 269.25	ASR/PAR
-------------------	--	------------------------------------	--------------------------	--------------------	---------



EMERG SAFE ALT 100 NM 3400



CATEGORY	A	B	C	D
S-1*	440-3/4	416 (500-3/4)	440-1	416 (500-1)
CIRCLING	500-1	474 (500-1)	500-1 1/2 474 (500-1 1/2)	580-2 554 (600-2)

TACAN RWY 1

SE-2, 08 OCT 2020 to 05 NOV 2020

SE-2, 08 OCT 2020 to 05 NOV 2020