

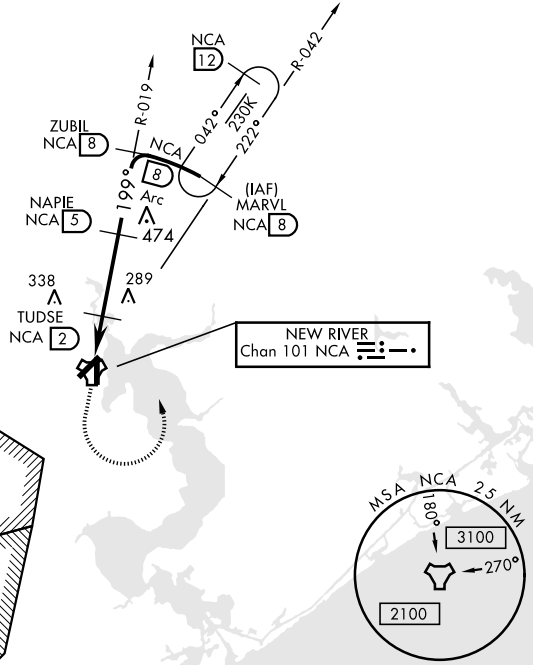
TACAN RWY 19

TACAN NCA Chan 101	APCH CRS 199°	Rwy ldg TDZE 23 Arprt Elev 26
---------------------------	----------------------	------------------------------------------------

AL-732 [USN] NEW RIVER MCAS (MC CUTCHEON FLD)(KNCA)

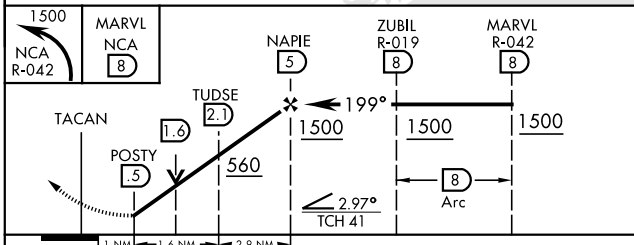
<p>▽ MISSED APPROACH: Climbing left turn to 1500 intercept NCA R-042 direct MARVL (R-042/8 DME) and hold.</p>					
ATIS ★ 288.325	CHERRY POINT APP CON 119.35 377.175	NEW RIVER TOWER★ 120.00★ 360.2	GND CON 121.8 254.275	CLNC DEL 269.25	ASR/PAR

CAUTION: Inmed seg len 3 NM.

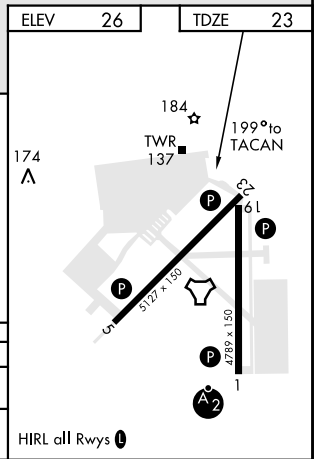


RADAR REQUIRED

EMERG SAFE ALT 100 NM 3400



CATEGORY	A		B	C		D
S-19	440-1	417	(500-1)	440-1½	417	(500-1½)
CIRCLING	500-1	474	(500-1)	500-1½ 474 (500-1½)	580-2 554 (600-2)	



TACAN RWY 19

SE-2, 08 OCT 2020 to 05 NOV 2020

SE-2, 08 OCT 2020 to 05 NOV 2020