

LOC/DME I-EDE <b>110.95</b> Chan <b>46 (Y)</b>	APP CRS <b>190°</b>	Rwy Idg TDZE Apt Elev	<b>6000</b> <b>20</b> <b>20</b>
--	------------------------	-----------------------------	---------------------------------------

# ILS or LOC RWY 19

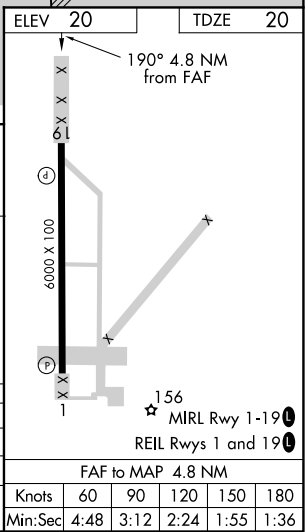
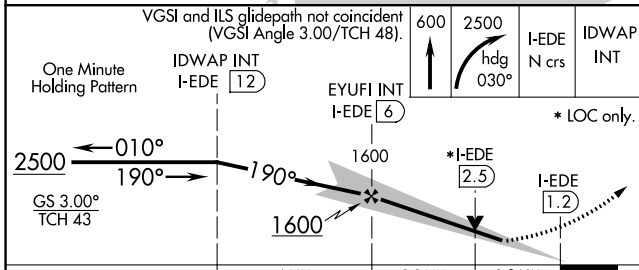
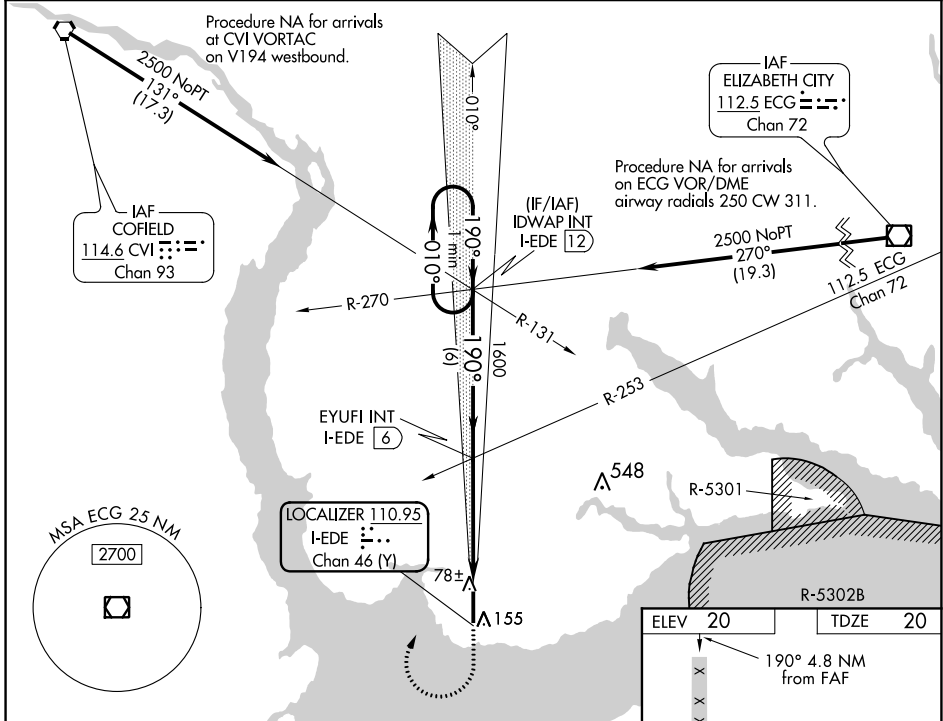
NORTHEASTERN RGNL (E/D/E)

DME or RADAR required for procedure entry.

⚠ When local altimeter setting not received, use Elizabeth City altimeter setting and increase all DA 56 feet and all MDA 60 feet and increase S-ILS 19 all Cats and S-LOC 19 Cats C/D visibility 1/8 mile. VDP NA when using Elizabeth City altimeter setting.

MISSED APPROACH: Climb to 600 then climbing right turn to 2500 on heading 030° and I-EDE localizer N course to IDWAP INT/I-EDE 12 DME and hold.

AWOS-3 <b>118.275</b>	WASHINGTON CENTER <b>123.85 279.65</b>	UNICOM <b>123.0 (CTAF) 0</b>
--------------------------	---	---------------------------------



CATEGORY	A	B	C	D
S-ILS 19		220-3/4	200 (200-3/4)	
S-LOC 19	480-1	460 (500-1)	480-1 1/8	460 (500-1 1/8)
CIRCLING	520-1	500 (500-1)	520-1 1/2	580-2 560 (600-2)

SE-2, 08 OCT 2020 to 05 NOV 2020

SE-2, 08 OCT 2020 to 05 NOV 2020

FAF to MAP 4.8 NM					
Knots	60	90	120	150	180
Min:Sec	4:48	3:12	2:24	1:55	1:36