


LOC/DME I-HOB <b>108.5</b> Chan 22	APP CRS <b>038°</b>	Rwy Idg <b>7020</b> TDZE <b>3652</b> Apt Elev <b>3661</b>
--	------------------------	---

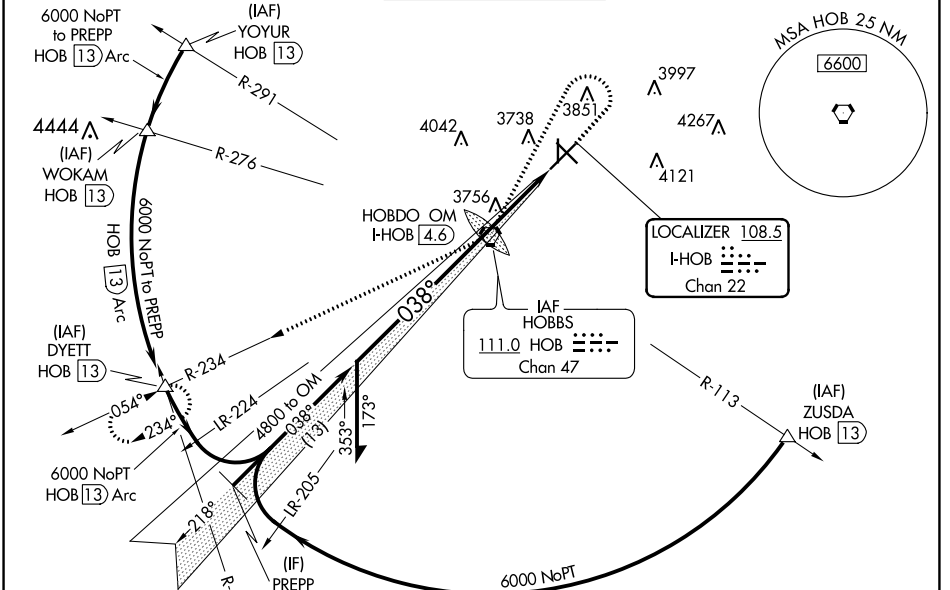
# ILS or LOC RWY 3

LEA COUNTY RGNL (HOB)

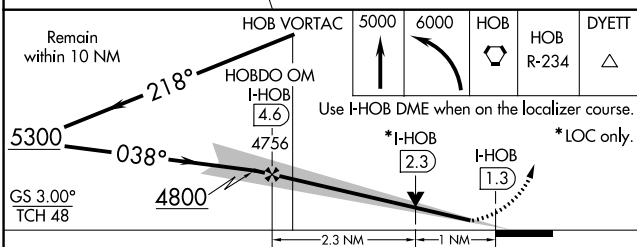
**⚠** When local altimeter setting not received, use Carlsbad altimeter setting and increase all DA 281 feet and all MDA 300 feet; increase S-ILS all Cats visibility 3/4 mile, increase S-LOC Cats C/D visibility 3/4 mile, increase Circling Cat C visibility 3/4 mile, increase Circling Cat D visibility 1/2 mile. For inoperative MALSRS, increase Carlsbad altimeter setting S-ILS all Cats visibility to 1 1/4. VDP N/A when using Carlsbad altimeter setting. Rwy 17 helicopter visibility reduction below 1 SM NA. Circling Rwy 17 NA at night.

**MALSRS**  
  
**MISSED APPROACH:** Climb to 5000 then descending left turn to 6000 direct HOB VORTAC then via HOB VORTAC R-234 to DYETT INT/HOB 13 DME and hold.

ATIS <b>119.75</b>	FORT WORTH CENTER <b>133.1 298.95</b>	HOBBES TOWER * <b>120.65 (CTAF) 0 317.4</b>	GND CON <b>121.9</b>	UNICOM <b>122.95</b>
-----------------------	--	--	-------------------------	-------------------------



Remain within 10 NM	HOBBES VORTAC	5000	6000	HOBBES	HOBBES R-234	DYETT
	HOBBES OM					



CATEGORY	A	B	C	D
S-ILS 3		3852-1/2	200 (200-1/2)	
S-LOC 3		4020-1/2	368 (400-1/2)	4020-3/4 368 (400-3/4)
<b>C</b> CIRCLING	4120-1 459 (500-1)	4160-1 499 (500-1)	4440-2 1/4 779 (800-2 1/4)	4440-2 1/2 779 (800-2 1/2)

ELEV 3661	<b>D</b> TDZE 3652
-----------	--------------------

**TWR 3710**  
 3696, 3700, 3700±, 3669±, 3687, 35, 7398 X 130, 001 X 8649, 002 X 130, 0.4° UP

**038° 3.3 NM from FAF**  
 MIRL Rwy 12-30  
 HIRL Rwy 3-21  
 REIL Rwy 21

FAF to MAP 3.3 NM					
Knots	60	90	120	150	180
Min:Sec	3:18	2:12	1:39	1:19	1:06

SW-1, 08 OCT 2020 to 05 NOV 2020

SW-1, 08 OCT 2020 to 05 NOV 2020