

ILS or LOC RWY 11

LOC I-DJR 109.7	APCH CRS 109°	Rwy ldg 10,002 TDZE 1068 Arprt Elev 1068	AL-959 [USAF]	DOBBINS ARB (KMGE)
---------------------------	-------------------------	---	---------------	--------------------

▽ * When ALS inop, increase RVR to 55 and vis to 1 mile.
 ** When ALS inop, increase CAT AB RVR to 55 and vis to 1 mile, CAT CDE vis to 1½ miles.

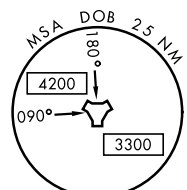
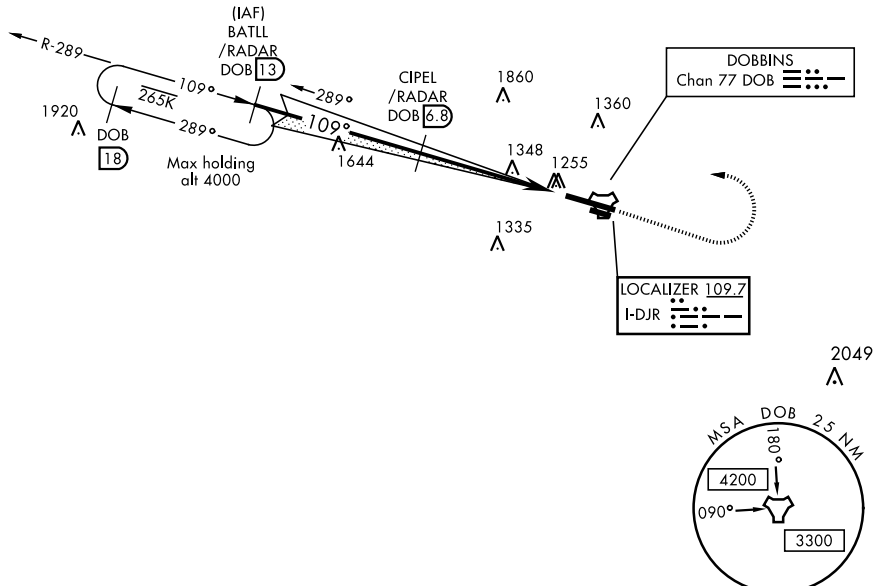
A1 ALSF-1

† MISSED APPROACH: Climb to 2000 track 109°, then climbing left turn to 3000, intercept the DOB R-289 to BATLL and hold.

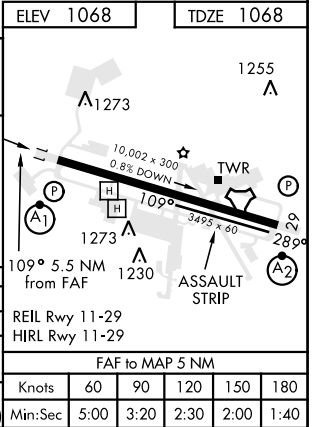
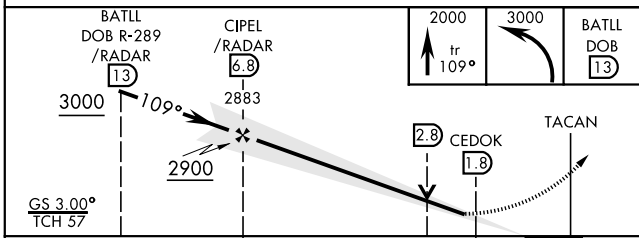
ATIS ★ 269.5	ATLANTA APP CON 121.0 268.7	DOBBINS TOWER ★ 120.75 370.875	GND CON 125.3 275.8	ASR
------------------------	---------------------------------------	--	-------------------------------	-----

*** Circling not authorized N of Rwy 11-29 for CAT DE aircraft, Circling to assault strip not authorized all CAT.

† Missed approach requires use of RNAV or ATC RADAR monitoring.



DME REQUIRED
EMERG SAFE ALT 100 NM 7700



CATEGORY	A	B	C	D	E
S-ILS 11*	1401/40		333	(400-¾)	
S-LOC 11**	1600/40 532 (600-¾)		1600/55 532 (600-1)		
*** CIRCLING	1660-1 592 (600-1)		1700-1¾ 632 (700-1¾)	1700-2 632 (700-2)	1700-2¼ 632 (700-2¼)

Knots	60	90	120	150	180
Min:Sec	5:00	3:20	2:30	2:00	1:40

ILS or LOC RWY 11

SE-4, 08 OCT 2020 to 05 NOV 2020

SE-4, 08 OCT 2020 to 05 NOV 2020