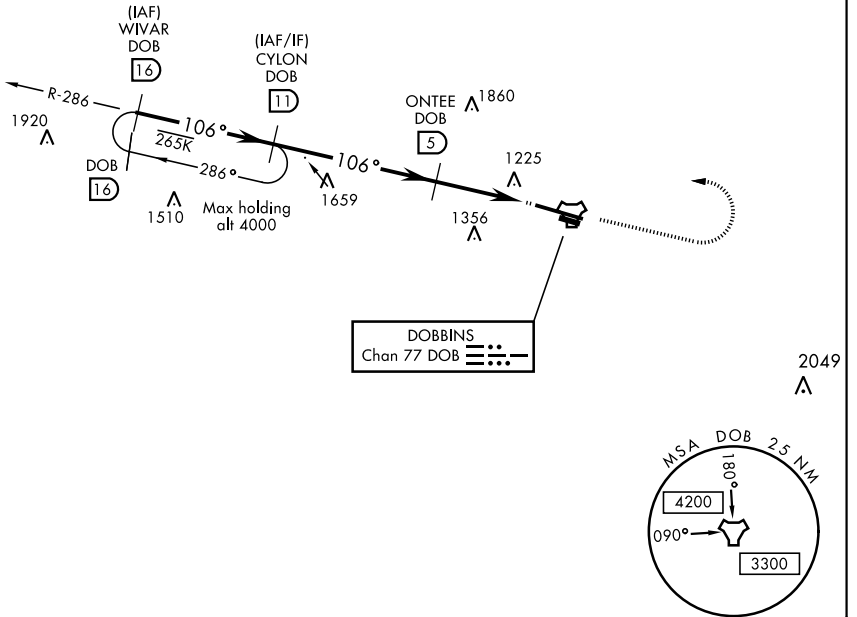


TACAN RWY 11

TACAN Chan 77	APCH CRS 106°	Rwy ldg 10,002 TDZE 1068 Arprt Elev 1068	AL-959 [USAF]	DOBBINS ARB (KMGE)
▼ * When ALS inop, increase CAT AB RVR to 55 and vis to 1 mile, CAT CDE vis to 1½ miles. ** Circling not authorized N of Rwy 11-29 for CAT D,E aircraft. Circling to assault strip not authorized all CAT.			ALSF-1 	† MISSED APPROACH: Climb to 2000 on track 106°, then climbing left turn to 3000, intercept DOB R-286 to CYLON and hold.

ATIS ★ 269.5	ATLANTA APP CON 121.0 268.7	DOBBINS TOWER ★ 120.75 370.875	GND CON 125.3 275.8	ASR
------------------------	---------------------------------------	--	-------------------------------	-----

† Missed approach requires use of RNAV or ATC RADAR monitoring.



EMERG SAFE ALT 100 NM 7700

WIVAR R-286 (16)	CYLON (11)	ONTEE (5)	KAMSE (1.8)	TACAN	ELEV 1068	TDZE 1068
3000	3000	2300	2000 tr 106°	3000		
2.97° TCH 56		3.2 NM		.5 NM		
CATEGORY	A	B	C	D	E	
S-11*	1600/40	532 (600-¾)	1600/55	532 (600-1)		
CIRCLING**	1660-1	592 (600-1)	1700-1¾ 632 (700-1¾)	1700-2 632 (700-2)	1700-2¼ 632 (700-2¼)	REIL Rwy 11-29 HIRL Rwy 11-29

TACAN RWY 11

SE-4, 08 OCT 2020 to 05 NOV 2020

SE-4, 08 OCT 2020 to 05 NOV 2020