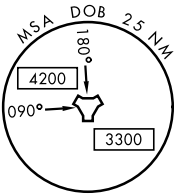
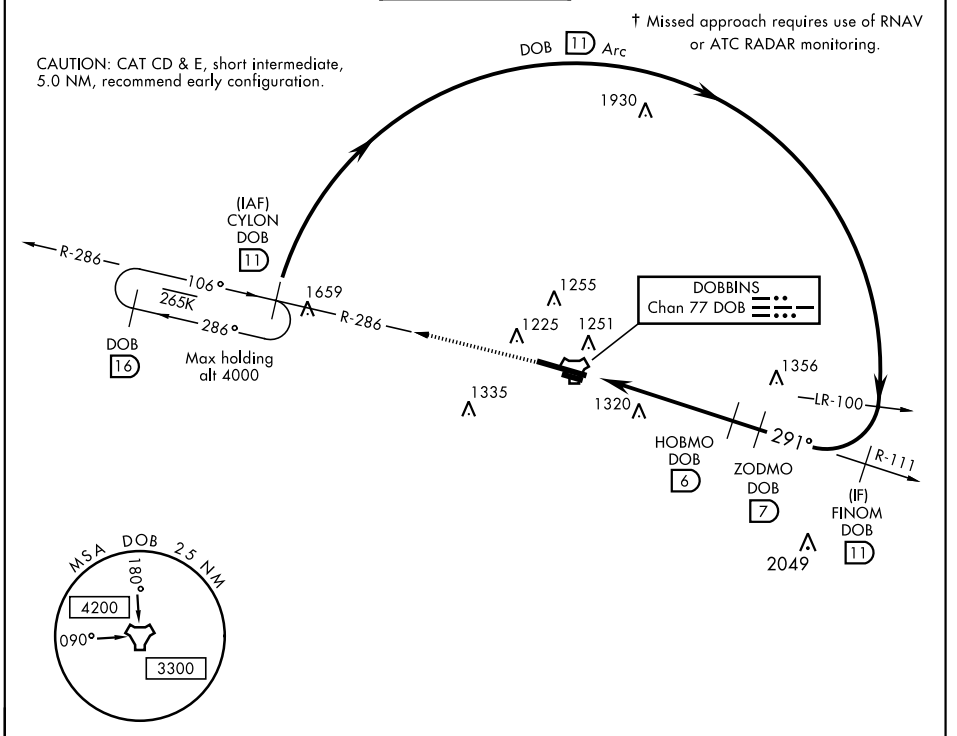


# TACAN RWY 29

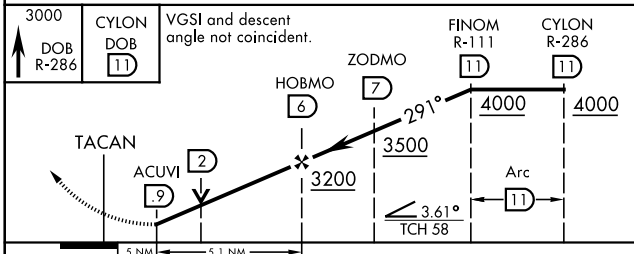
TACAN Chan <b>77</b>	APCH CRS <b>291°</b>	Rwy ldg <b>10,002</b> TDZE <b>1014</b> Arprt Elev <b>1068</b>	AL-959 [USAF]	DOBBINS ARB (KMGE)
-------------------------	-------------------------	---	---------------	--------------------

<p>▼ * When ALS inop, increase CAT AB RVR to 55 and vis to 1 mile, CAT CDE vis to 1¾ miles.</p> <p>** Circling not authorized N of Rwy 11-29 for CAT DE aircraft. Circling to assault strip not authorized all CAT.</p>	<p>SALS A2</p>	<p>† MISSED APPROACH: Climb to 3000 via DOB R-286 to CYLON and hold.</p>
---	--------------------	--

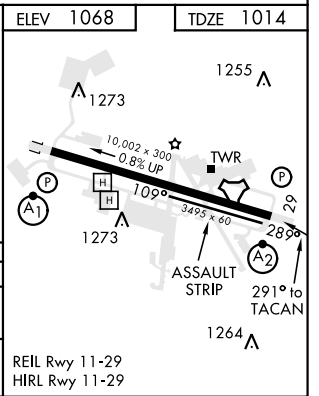
ATIS ★ <b>269.5</b>	ATLANTA APP CON <b>121.0 268.7</b>	DOBBINS TOWER ★ <b>120.75 370.875</b>	GND CON <b>125.3 275.8</b>	ASR
------------------------	---------------------------------------	--	-------------------------------	-----



EMERG SAFE ALT 100 NM 7700



CATEGORY	A	B	C	D	E
S-29 *	1580/40	566 (600-¾)	1580-1¾ 632 (700-1¾)	566 632 (700-2)	(600-1¾)
CIRCLING **	1660-1	592 (600-1)	1700-1¾ 632 (700-1¾)	1700-2 632 (700-2)	1700-2¼ 632 (700-2¼)



# TACAN RWY 29

SE-4, 08 OCT 2020 to 05 NOV 2020

SE-4, 08 OCT 2020 to 05 NOV 2020