


WAAS CH 60916 W29A	APP CRS 286°	Rwy Idg TDZE Apt Elev	7504 122 151
--	------------------------	-----------------------------	---

RNAV (GPS) RWY 29

GAINESVILLE RGNL (G.N.V.)

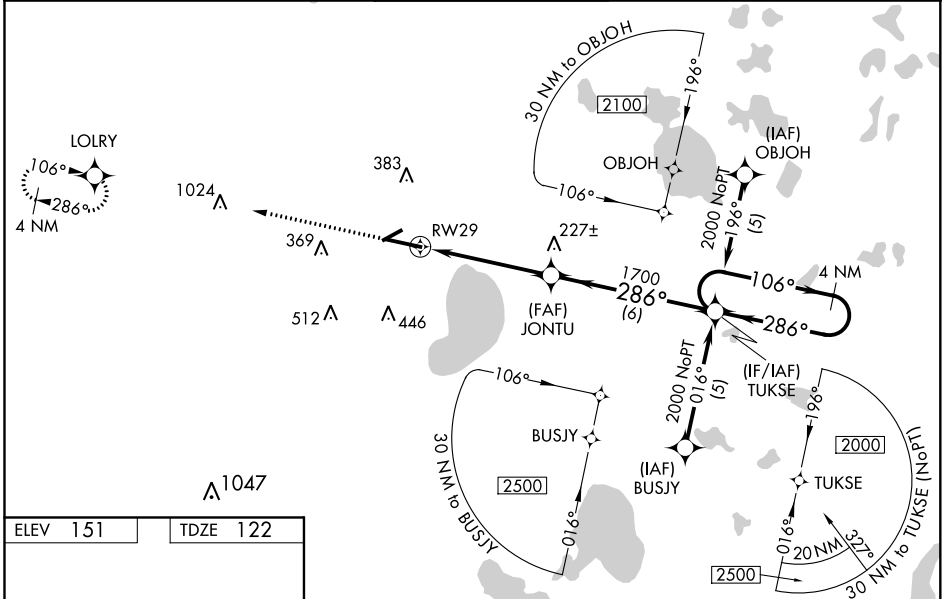
⚠ DME/DME RNP-0.3 NA. For inoperative MALSR, increase LPV all Cats visibility to RVR 5000 and increase LNAV Cat D visibility to RVR 6000. For inoperative MALSR using Ocala Intl-Jim Taylor Field altimeter setting, increase LPV all Cats visibility to 1 1/2 mile. When local altimeter setting not received, use Ocala Intl-Jim Taylor Field altimeter setting and increase all DA 81 feet and all MDA 100 feet. Increase LPV all Cats and LNAV/VNAV all Cats visibility to RVR 5000, LNAV Cat C visibility to RVR 4000, and Circling Cat D visibility to 2 1/2 mile. For uncompensated Baro-VNAV systems, LNAV/VNAV NA below -1.5°C (5°F) or above 48°C (118°F). Baro-VNAV and VDP NA when using Ocala Intl-Jim Taylor Field altimeter setting. When VGSI inoperative, Circling Rwy 25 NA at night.

MALSR

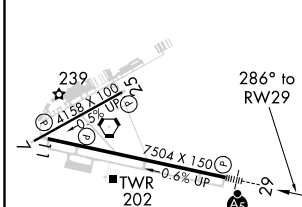


MISSED APPROACH:
Climb to 2100 direct
LOLRY and hold.

ATIS 127.15	JACKSONVILLE APP CON 118.175 338.25	GAINESVILLE TOWER★ 119.55 (CTAF) 0 353.7	GND CON 121.7	UNICOM 122.95
-----------------------	---	--	-------------------------	-------------------------



ELEV 151	TDZE 122
----------	----------



2100	LOLRY	VGSI and RNAV glidepath not coincident (VGSI Angle 3.00/TCH 55).	TUKSE	4 NM Holding Pattern
*LNAV Only		*1 NM to RWY 29	JONTU	2000
RWY 29		1 NM	3.8 NM	6 NM
286° to RWY 29		1700	106°	286°
			GP 3.00°	TCH 50

CATEGORY	A	B	C	D
LPV DA		420/24	298 (300-1/2)	
LNAV/VNAV DA		480/40	358 (400-3/4)	
LNAV MDA		500/24	378 (400-1/2)	500/50 378 (400-1)
CIRCLING	620-1	469 (500-1)	620-1 1/2 469 (500-1 1/2)	740-2 589 (600-2)

REIL Rwy 11
MIRL Rwy 7-25
HIRL Rwy 11-29

SE-3, 08 OCT 2020 to 05 NOV 2020

SE-3, 08 OCT 2020 to 05 NOV 2020