

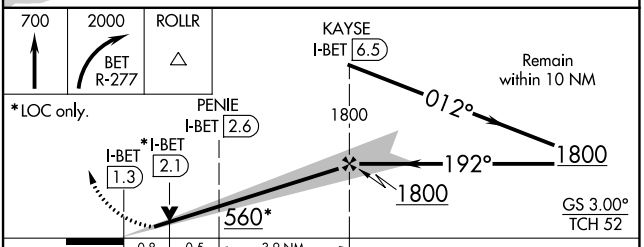
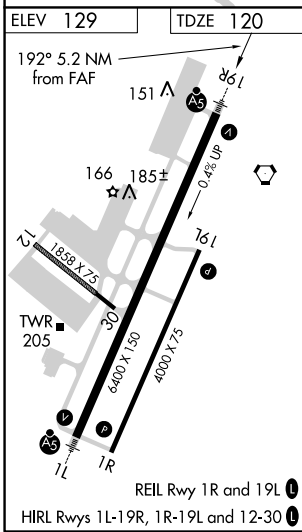
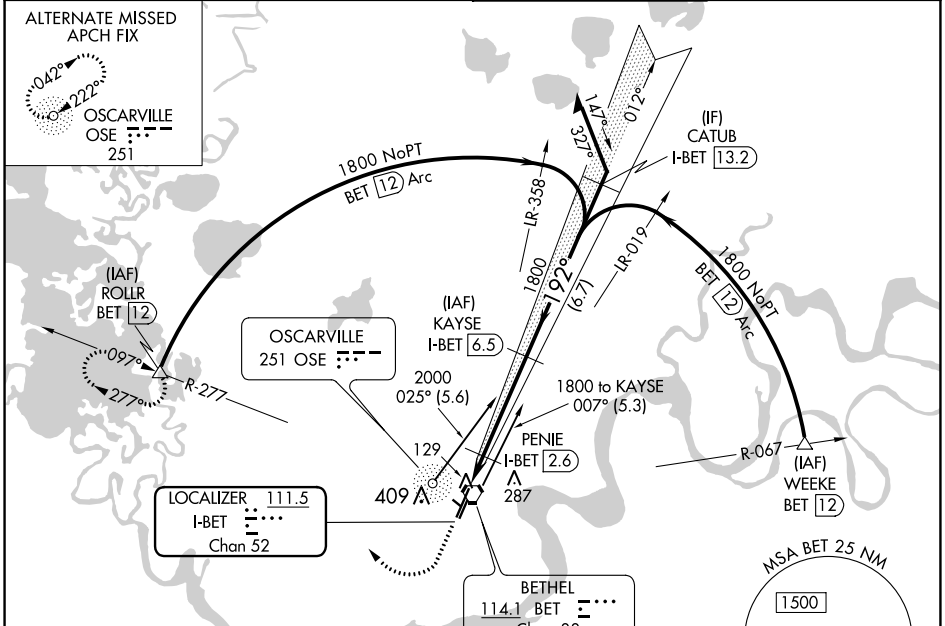
LOC/DME I-BET <b>111.5</b> Chan <b>52</b>	APP CRS <b>192°</b>	Rwy Idg TDZE Apt Elev	<b>6400</b> <b>120</b> <b>129</b>
---	------------------------	-----------------------------	---

# ILS Z or LOC Z RWY 19R

BETHEL (BET)(PABE)

DME required.	MALS R	MISSED APPROACH: Climb to 700 then climbing right turn to 2000 on BET VORTAC R-277 to ROLLR/BET VORTAC 12 DME and hold.
<p>⚠ Circling NA west of Rwy 1L-19R.</p> <p>⚠ For inop ALS, increase S-LOC Cat C/D visibility to RVR 4500. #RVR 1800 authorized with the use of FD or AP or HUD to DA.</p>		

ATIS <b>119.8</b>	ANCHORAGE CENTER <b>125.2 372.0</b>	BETHEL TOWER * <b>118.7</b> (CTAF) <b>0</b>	GND CON <b>121.7</b>
----------------------	--	--	-------------------------



CATEGORY	A	B	C	D
S-ILS 19R#	320/24 200 (200-½)			
S-LOC 19R	400/24 280 (300-½)			
CIRCLING	500-1	600-1	600-1½	680-2
	371 (400-1)	471 (500-1)	471 (500-1½)	551 (600-2)

AK, 10 SEP 2020 to 05 NOV 2020

AK, 10 SEP 2020 to 05 NOV 2020