

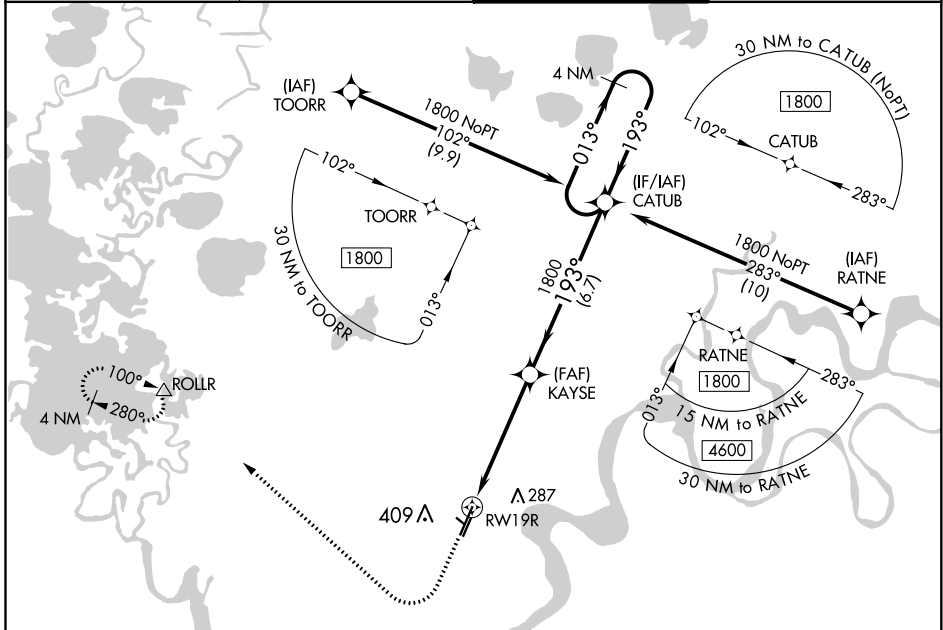
WAAS CH <b>70507</b> W19A	APP CRS <b>193°</b>	Rwy Idg TDZE <b>120</b> Apt Elev <b>129</b>	<b>6400</b>
---------------------------------	------------------------	---	-------------

# RNAV (GPS) RWY 19R

BETHEL (BET)(PABE)

<p>▼ For uncompensated Baro-VNAV systems, LNAV/VNAV NA below -25°C (-13°F) or above 54°C (130°F). Circling NA west of Rwy 1L-19R. DME/DME RNP-0.3 NA.</p>	MALSR	MISSED APPROACH: Climb to 1700 then climbing right turn to 2000 direct ROLLR and hold.

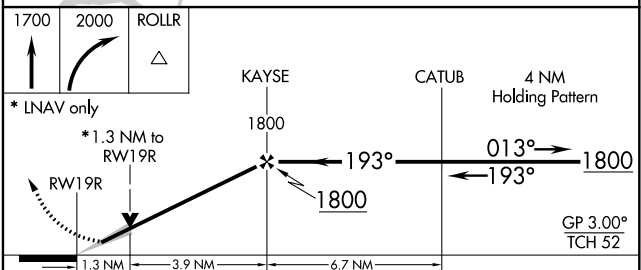
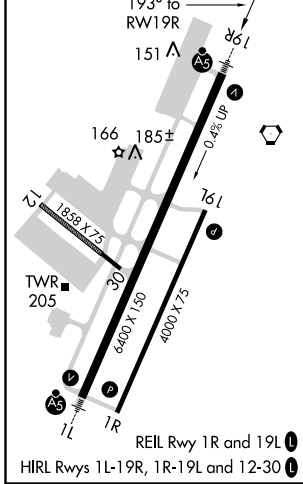
ATIS <b>119.8</b>	ANCHORAGE CENTER <b>125.2 372.0</b>	BETHEL TOWER ★ <b>118.7 (CTAF) 0</b>	GND CON <b>121.7</b>
----------------------	--	---	-------------------------



AK, 10 SEP 2020 to 05 NOV 2020

AK, 10 SEP 2020 to 05 NOV 2020

ELEV 129	TDZE 120
----------	----------



CATEGORY	A	B	C	D
LPV DA	DA	320/24	200 (200-½)	
LNAV/VNAV DA	DA	479/40	359 (400-¾)	
LNAV MDA	560/24	440 (500-½)	560/45	440 (500-¾)
<input checked="" type="checkbox"/> CIRCLING	560-1 431 (500-1)	600-1 471 (500-1)	600-1½ 471 (500-1½)	680-2 551 (600-2)