

VORTAC CRE <b>114.4</b> Chan <b>91</b>	APP CRS <b>238°</b>	Rwy Idg <b>5997</b> TDZE <b>29</b> Apt Elev <b>31</b>
--	------------------------	---

# VOR RWY 23

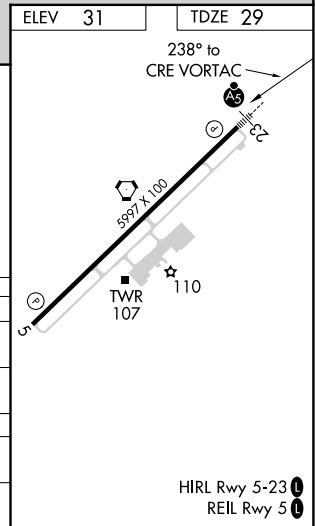
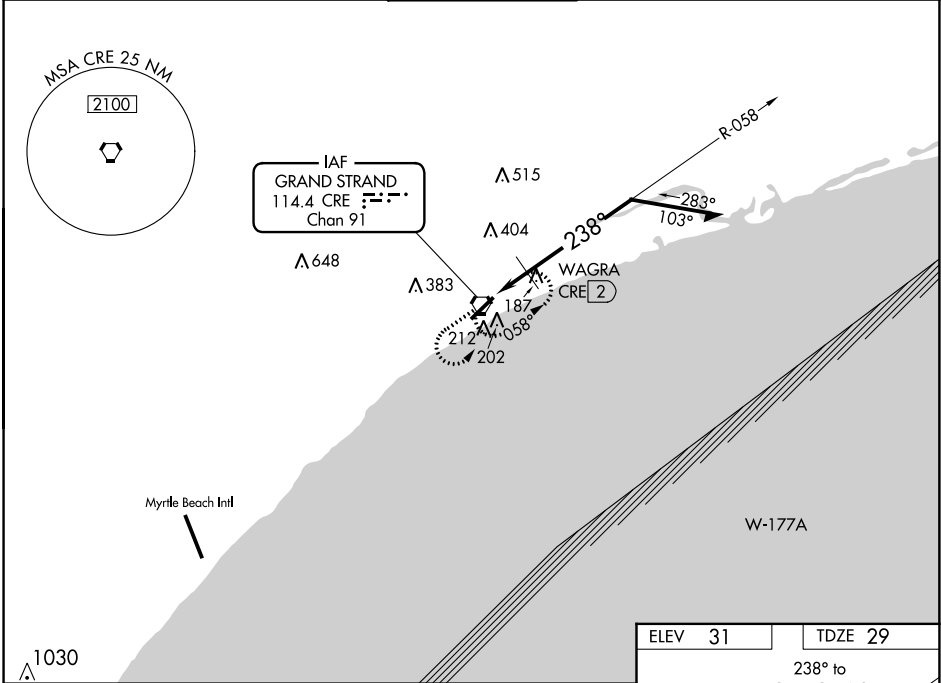
GRAND STRAND (CRE)

**⚠** For inoperative MALSR, increase S-23 and S-23 DME minimums Cats A and B visibility to 1 mile. Visibility reduction by helicopters NA. When local altimeter setting not received use Myrtle Beach Intl altimeter setting and increase all MDA 40 feet. For inoperative MALSR when using Myrtle Beach Intl altimeter setting, increase S-23 and S-23 DME minimums Cats A and B visibility to 1 mile.



MISSED APPROACH: Climb to 2000 then left turn direct CRE VORTAC and hold.

ATIS <b>119.625</b>	MYRTLE BEACH APP CON * <b>119.2 350.3</b>	STRAND TOWER * <b>124.6 (CTAF) 257.6</b>	GND CON <b>121.8 257.6</b>	UNICOM <b>122.95</b>
------------------------	--	---	-------------------------------	-------------------------



2000	CRE	CRE VORTAC	Remain within 10 NM
*600 when using Myrtle Beach Intl altimeter setting.		WAGRA CRE 2	
		058°	1700
		238°	*560
		2.87°	TCH 55
		0.4	1.6 NM

CATEGORY	A	B	C	D
S-23	560-3/4	531 (600-3/4)	560-1 531 (600-1)	560-1 1/4 531 (600-1 1/4)
CIRCLING	560-1	529 (600-1)	560-1 1/2 529 (600-1 1/2)	720-2 1/4 689 (700-2 1/4)
WAGRA FIX MINIMUMS				
S-23	460-3/4	431 (500-3/4)		460-1 431 (500-1)
CIRCLING	520-1	489 (500-1)	520-1 1/2 489 (500-1 1/2)	720-2 1/4 689 (700-2 1/4)

SE-2, 08 OCT 2020 to 05 NOV 2020

SE-2, 08 OCT 2020 to 05 NOV 2020