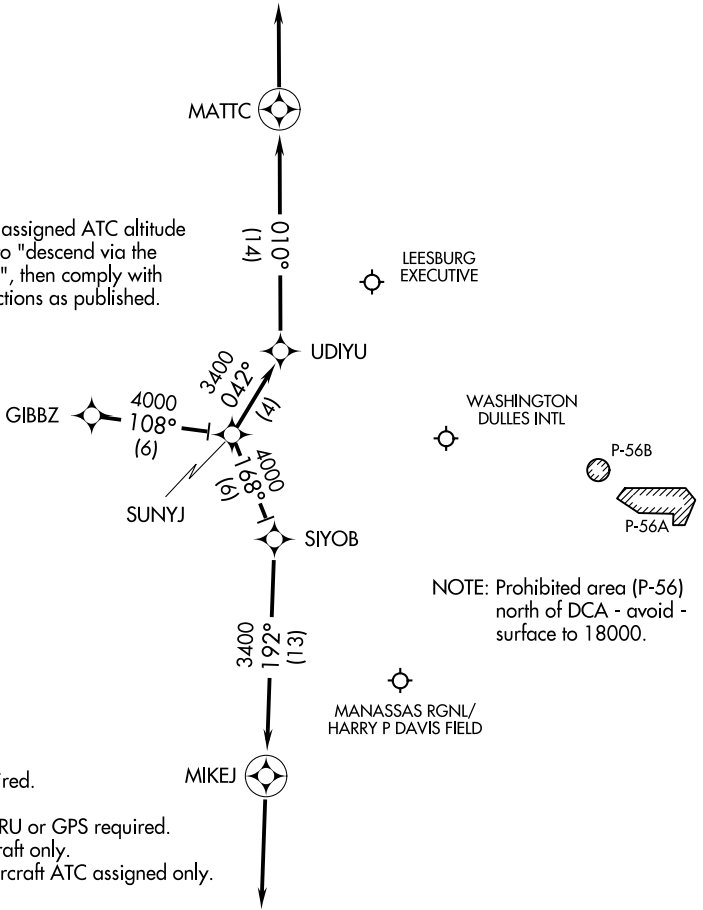


GIBBZ THREE ARRIVAL (RNAV) Arrival Routes

WASHINGTON, DC

POTOMAC APP CON
120.45 306.925
HEF ATIS
125.175
IAD D-ATIS
134.85

NOTE: Maintain last assigned ATC altitude until cleared to "descend via the GIBBZ THREE", then comply with altitude restrictions as published.



NOTE: RADAR required.
NOTE: RNAV 1.
NOTE: DME/DME/IRU or GPS required.
NOTE: Turbojet aircraft only.
NOTE: Turboprop aircraft ATC assigned only.

NOTE: Prohibited area (P-56) north of DCA - avoid - surface to 18000.

NOTE: Chart not to scale.

ARRIVAL ROUTE DESCRIPTION

LANDING IAD RUNWAYS 19C, 19L, 19R: From GIBBZ on track 108° to SUNYJ, then on track 042° to UDIYU, then on track 010° to MATTC. Expect radar vectors to final approach course.

LANDING IAD RUNWAYS 1C, 1L, 1R, 30: From over GIBBZ on track 108° to SUNYJ, then on track 168° to SIYOB, then on track 192° to MIKEJ. Expect radar vectors to final approach course.

NE-3, 08 OCT 2020 to 05 NOV 2020

NE-3, 08 OCT 2020 to 05 NOV 2020