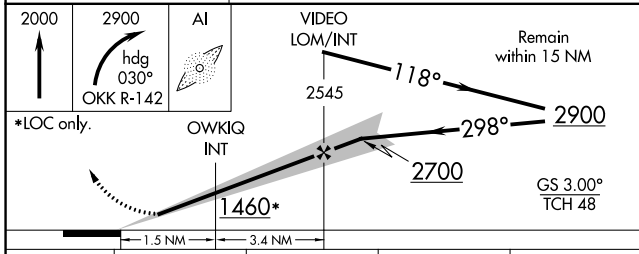
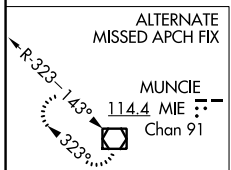
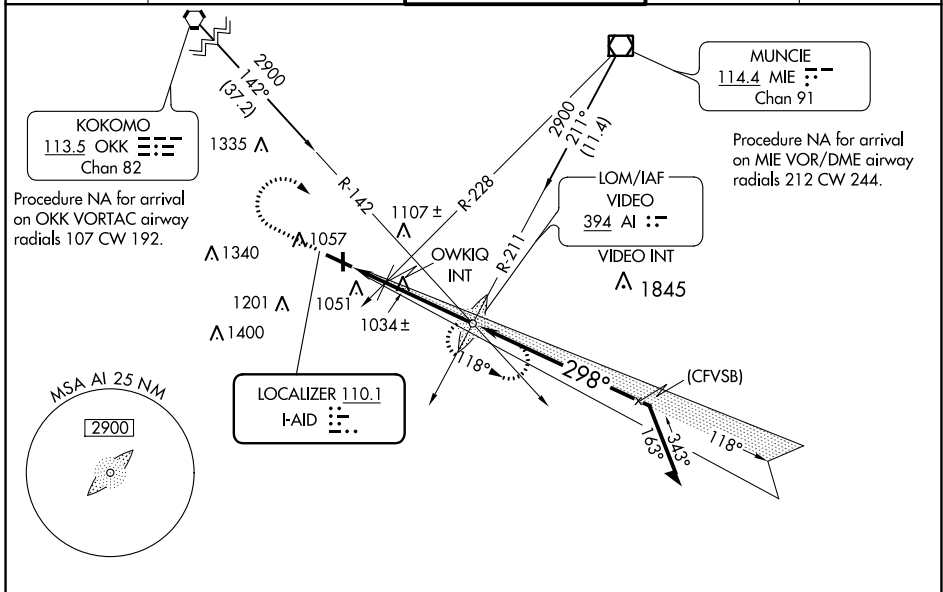


LOC I-AID <b>110.1</b>	APP CRS <b>298°</b>	Rwy ldg TDZE Apt Elev <b>5320</b> <b>919</b> <b>919</b>
---------------------------	------------------------	--

**ILS or LOC RWY 30**  
ANDERSON MUNI-DARLINGTON FIELD (AID)

<b>⚠</b> Circling Rwy 12, 36 NA at night. Rwy 30 helicopter visibility reduction below $\frac{3}{4}$ SM NA.	<b>MALSF</b> 	MISSED APPROACH: Climb to 2000 then climbing right turn to 2900 heading 030° and OKK VORTAC R-142 to VIDEO LOM and hold.
---	------------------	--

AWOS-3 <b>128.55</b>	INDIANAPOLIS APP CON <b>120.65 317.8</b>	ANDERSON TOWER ★ <b>126.0 (CTAF) 0</b>	GND CON <b>121.6</b>	UNICOM <b>122.95</b>
-------------------------	---	---	-------------------------	-------------------------



ELEV 919	TDZE 919
TWR 957 81	3399
992	1750
36	36
15	36
0.7% UP	5400 X 100
298° 4.9 NM from FAF	

REIL Rwy 12  
MIRL Rwy 12-30 and 18-36  
FAF to MAP 4.9 NM

Knots	60	90	120	150	180
Min:Sec	4:54	3:16	2:27	1:58	1:38

CATEGORY	A	B	C	D
S-ILS 30	1209- $\frac{3}{4}$ 290 (300- $\frac{3}{4}$ )			
S-LOC 30	1360- $\frac{3}{4}$ 441 (500- $\frac{3}{4}$ )	1360-1 441 (500-1)		
<b>C</b> CIRCLING	1360-1 441 (500-1)	1400-1 481 (500-1)	1520-1 $\frac{3}{4}$ 601 (700- $\frac{1}{4}$ )	1520-2 601 (700-2)