

VORTAC RZC 116.4 Chan 111	APP CRS 356°	Rwy Idg TDZE Apt Elev	5302 1353 1353
--	------------------------	-----------------------------	---

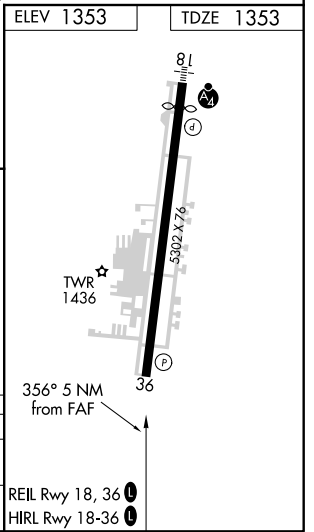
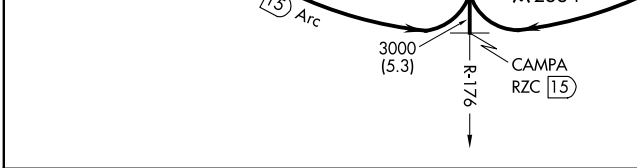
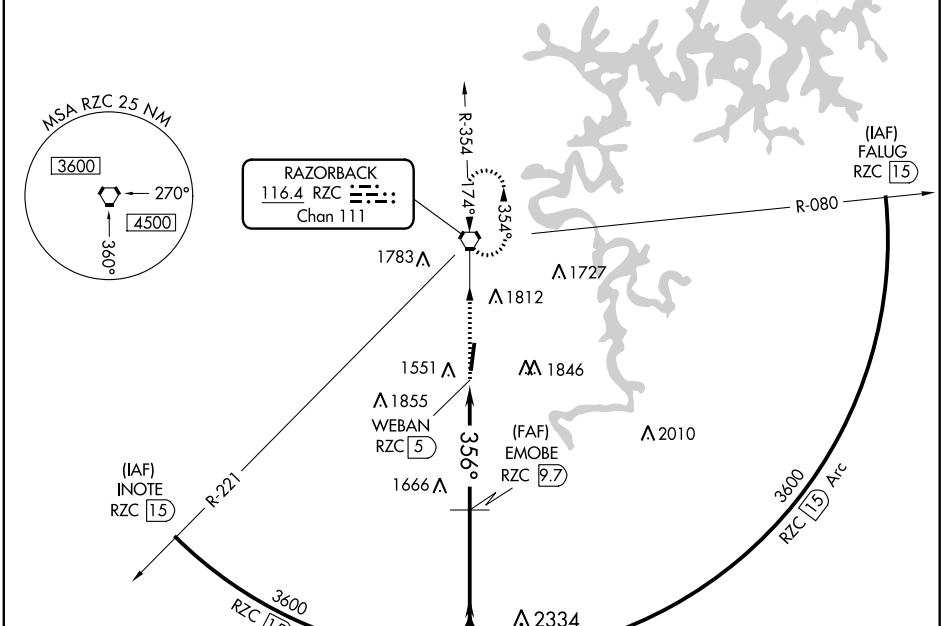
VOR/DME RWY 36

SPRINGDALE MUNI (ASG)

⚠ Circling NA east of Rwy 18-36. When local altimeter setting not received, use Fayetteville/Drake Field altimeter setting and increase all MDA 40 feet; increase visibility S-36 Cat C/D 1/4 mile and Circling Cat C/D 1/4 mile. Helicopter visibility reduction below 3/4 SM NA.

MISSED APPROACH: Climb to 3000 via R-176 to RZC VORTAC and hold.

AWOS-3 124.675	RAZORBACK APP CON* 126.6 305.2	SPRINGDALE TOWER* 118.2 (CTAF) 0	GND CON 121.6	REIL 18, 36 122.8 0	UNICOM 122.95
--------------------------	--	---	-------------------------	-------------------------------	-------------------------



3000 RZC ↑ R-176	EMOBE RZC (9.7)	CAMPA RZC (15)	Procedure Turn NA	
WEBAN RZC (5)	3000	3600		
0.4	4.7 NM	5.3 NM		
CATEGORY	A	B	C	D
S-36	1980-1	627 (700-1)	1980-1 3/4	627 (700-1 3/4)
C CIRCLING	1980-1 627 (700-1)	2000-1 647 (700-1)	2020-1 3/4 667 (700-1 3/4)	2220-2 3/4 867 (700-2 3/4)

SC-1, 08 OCT 2020 to 05 NOV 2020

SC-1, 08 OCT 2020 to 05 NOV 2020