

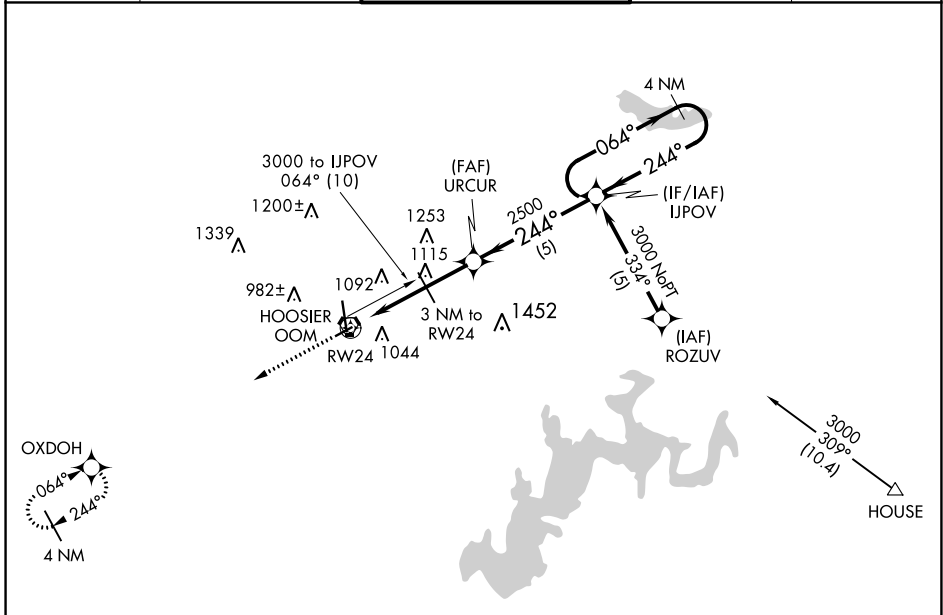
APP CRS 244°	Rwy Idg 3576
	TDZE 841
	Apt Elev 846

RNAV (GPS) RWY 24

MONROE COUNTY (BMG)

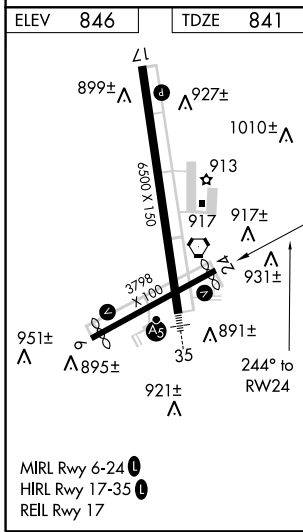
RNP APCH.		MISSED APPROACH: Climb to 3000 direct OXDOH WP and hold.		
<p>▼ Rwy 24 helicopter visibility reduction below 1 SM NA. Procedure NA at night.</p> <p>▲ When local altimeter setting not received use Terre Haute Rgnl altimeter setting and increase all MDA 140 feet; increase LNAV Cat C/D ¼ mile.</p>				

ASOS 110.2	HULMAN APP CON 128,025 339.8	BLOOMINGTON TOWER * 120.775 (CTAF) 0	GND CON 121.9	UNICOM 122.95
----------------------	--	--	-------------------------	-------------------------



EC-2, 08 OCT 2020 to 05 NOV 2020

EC-2, 08 OCT 2020 to 05 NOV 2020



ELEV	846	TDZE	841
<p>3000 OXDOH VGSI and descent angle not coincident (VGSI Angle 4.00/TCH 49).</p> <p>IJPOV 4 NM Holding Pattern</p> <p>URCUR RW24 3 NM to RW24 2500 064° 244° 3000</p> <p>1840 ≤ 3.06° TCH 31</p>			
CATEGORY	A	B	C
LNAV MDA	1320-1	479 (500-1)	1320-1¼ 479 (500-1¼)
			D
			1320-1½ 479 (500-1½)