

WAAS CH 72812 W 35A	APP CRS 354°	Rwy Idg TDZE Apt Elev	6500 844 846
---	------------------------	-----------------------------	---

RNAV (GPS) RWY 35

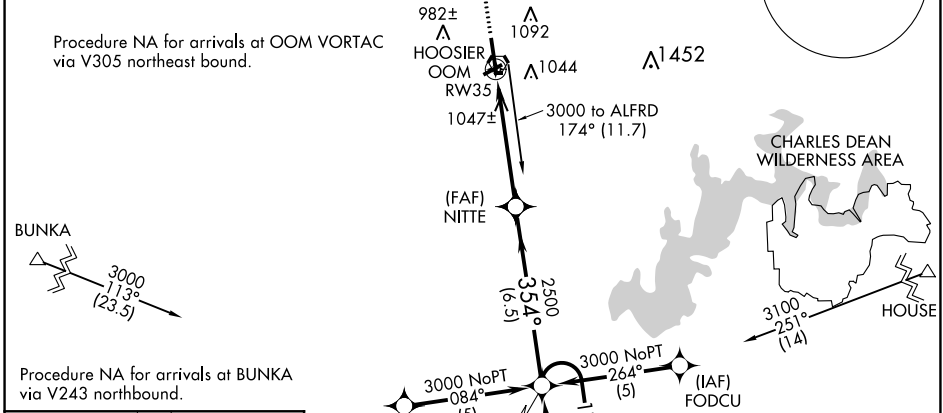
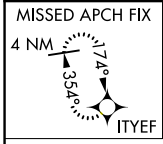
MONROE COUNTY (BMG)

⚠ For uncompensated Baro-VNAV systems, LNAV/VNAV NA below -16°C (4°F) or above 47°C (116°F). DME/DME RNP-0.3 NA. When local altimeter setting not received, use Terre Haute Rgnl altimeter setting and increase all DA 121 feet and all MDA 140 feet and increase LPV all Cats, LNAV Cat C, D and Circling Cat D visibility ½ mile. LNAV/VNAV all Cats and Circling C visibility ½ mile. For inoperative MALS/R when using Terre Haute Rgnl altimeter setting; increase LPV all Cats visibility ½ mile. Baro-VNAV and VDP NA when using Terre Haute Rgnl altimeter setting. Circling to Rwy 6/24 NA at night.

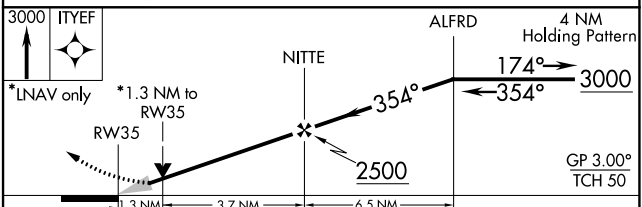
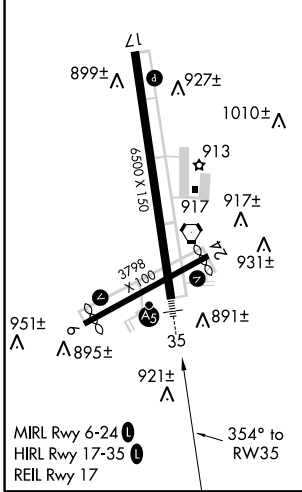


MISSED APPROACH:
Climb to 3000 direct ITYEF and hold.

ASOS 110.2	HULMAN APP CON 128.025 339.8	BLOOMINGTON TOWER * 120.775 (CTAF) 0	GND CON 121.9	UNICOM 122.95
----------------------	--	---	-------------------------	-------------------------



ELEV 846	TDZE 844
-----------------	-----------------



CATEGORY	A	B	C	D
LPV DA		1044-1/2	200 (200-1/2)	
LNAV/VNAV DA		1344-1 1/4	500 (500-1 1/4)	
LNAV MDA	1300-1/2	456 (500-1/2)	1300-3/4 456 (500-3/4)	1300-1 456 (500-1)
CIRCLING	1380-1 534 (600-1)	1400-1 554 (600-1)	1400-1 1/2 554 (600-1 1/2)	1400-2 554 (600-2)

EC-2, 08 OCT 2020 to 05 NOV 2020

EC-2, 08 OCT 2020 to 05 NOV 2020