

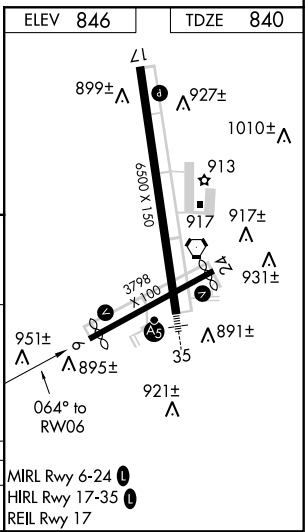
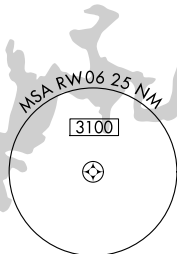
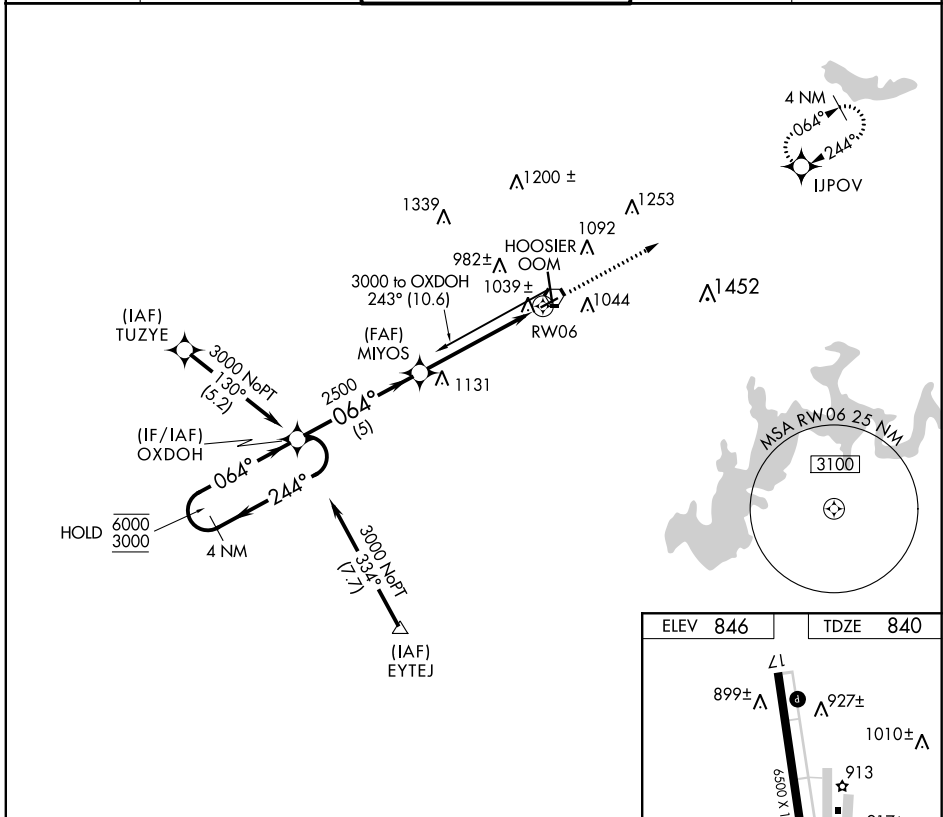
APP CRS	Rwy Idg	3494
064°	TDZE	840
	Apt Elev	846

RNAV (GPS) RWY 6

MONROE COUNTY (BMG)

RNP APCH.		MISSED APPROACH: Climb to 3000 direct IJPOV and hold.		
<p>Procedure NA at night. Rwy 6 helicopter visibility reduction below 1 SM NA.</p>				

ASOS 110.2	HULMAN APP CON 128.025 339.8	BLOOMINGTON TOWER * 120.775 (CTAF) 0	GND CON 121.9	UNICOM 122.95
----------------------	--	--	-------------------------	-------------------------



4 NM Holding Pattern	Visual Segment - Obstacles.	3000	IJPOV			
OXDOH	MIYOS					
6000 ← 244°	064° →					
3000	2500					
	5 NM	5 NM				
CATEGORY	A	B	C	D		
INAV MDA	1300-1	460 (500-1)	1300-1¼	460 (500-1¼)	1300-1½	460 (500-1½)

MIRL Rwy 6-24 0
HIRL Rwy 17-35 0
REIL Rwy 17

EC-2, 08 OCT 2020 to 05 NOV 2020

EC-2, 08 OCT 2020 to 05 NOV 2020