

VORTAC OOM <b>110.2</b> Chan <b>39</b>	APP CRS <b>169°</b>	Rwy ldg <b>6500</b> TDZE <b>846</b> Apt Elev <b>846</b>
--	------------------------	---

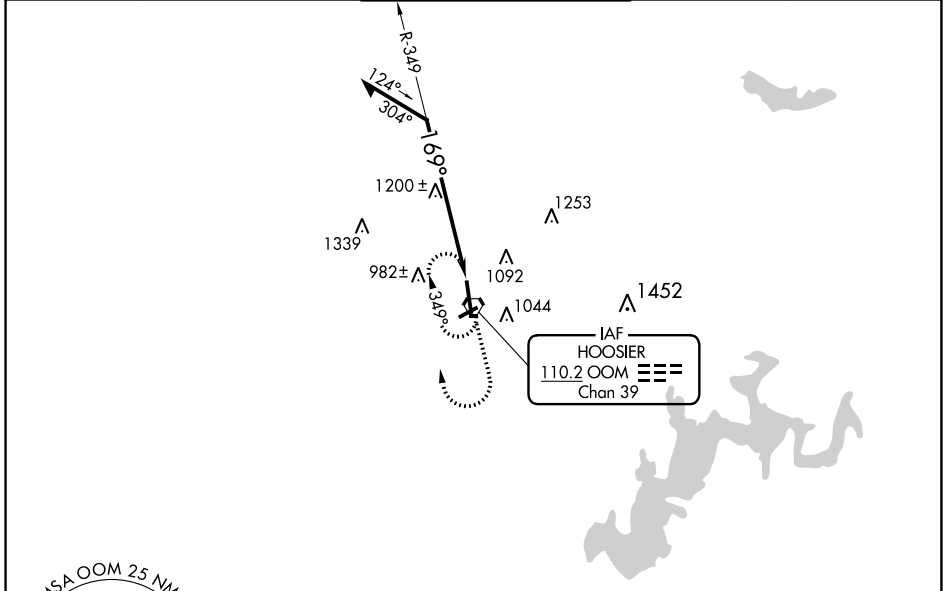
# VOR RWY 17

MONROE COUNTY (BMG)

**⚠** Helicopter visibility reduction below 3/4 SM NA. Circling to Rwy 6/24 NA at night. When local altimeter setting not received use Terre Haute Rgnl altimeter setting and increase all MDA 140 feet; increase S-17 and Circling Cat C/D visibility 1/2 mile.

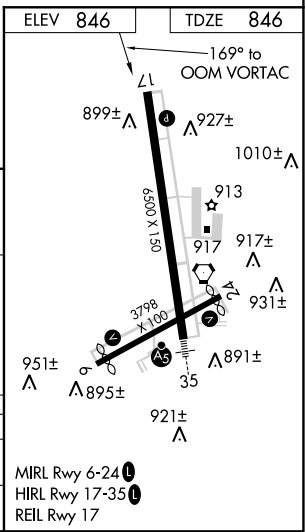
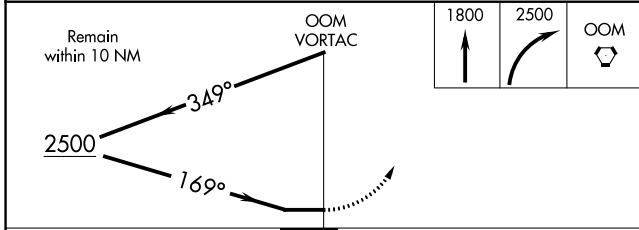
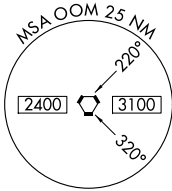
**MISSED APPROACH:** Climb to 1800 then climbing right turn to 2500 direct OOM VORTAC and hold.

ASOS <b>110.2</b>	HULMAN APP CON ★ <b>128.025 339.8</b>	BLOOMINGTON TOWER ★ <b>120.775 (CTAF) 0</b>	GND CON <b>121.9</b>	UNICOM <b>122.95</b>
----------------------	--	--	-------------------------	-------------------------



EC-2, 08 OCT 2020 to 05 NOV 2020

EC-2, 08 OCT 2020 to 05 NOV 2020



CATEGORY	A	B	C	D
S-17	1560-1 714 (800-1)	1560-2 714 (800-2)	1560-2 714 (800-2)	1560-2 1/4 714 (800-2 1/4)
CIRCLING	1560-1 714 (800-1)	1560-2 714 (800-2)	1560-2 714 (800-2)	1560-2 1/4 714 (800-2 1/4)