

LOC/DME I-AIK 109.9 Chan 36	APP CRS 066°	Rwy Idg TDZE Apt Elev	5500 515 529
---	------------------------	-----------------------------	---

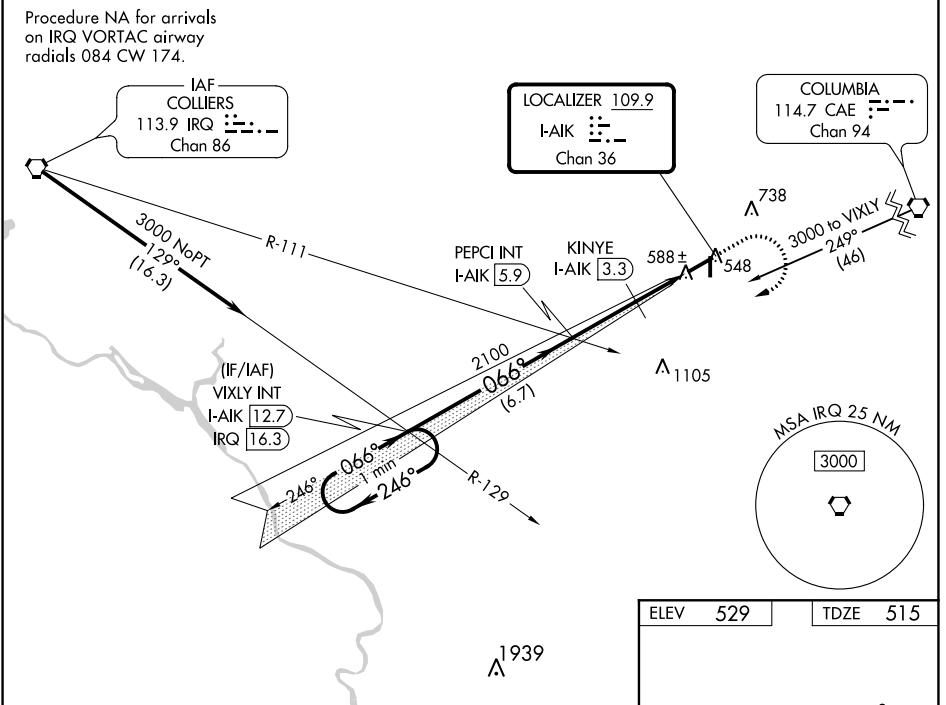
ILS or LOC/DME RWY 7

AIKEN RGNL (AIK)

V **NA** VDP NA with Augusta Rgnl at Bush Field altimeter setting. When local altimeter setting not received; use Augusta Rgnl at Bush Field altimeter setting and increase all DA 104 feet and all MDA 120 feet; increase S-ILS 7 all Cats and Circling Cat D visibilities ¼ mile and S-LOC 7 Cats C and D visibilities ⅓ mile.

MISSED APPROACH: Climb to 1100 then climbing right turn to 3000 on heading 276° and I-AIK SW course (246°) to VIXLY INT/I-AIK 12.7 DME and hold.

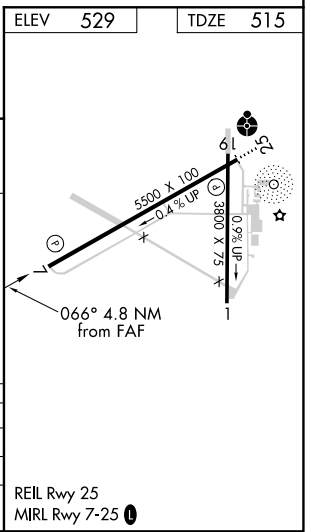
AWOS-3 118.025	AUGUSTA APP CON * 119.15 284.625	CLNC DEL 126.075	UNICOM 122.8 (CTAF)
--------------------------	--	----------------------------	-------------------------------



VGSI and ILS glidepath not coincident (VGSI Angle 3.00/TCH 41).

One Minute Holding Pattern

3000	←246°	→066°	066°	2100	←246°	→066°	2100	←246°	→066°	1100	←246°	→066°	1100	
# Min Ali 1160 when using Augusta Rgnl at Bush Field altimeter setting. # KINYE I-AIK (3.3) * I-AIK (2.1) * LOC only. * I-AIK (1.1)														
GS 3.00° TCH 45			6.7 NM			2.6 NM			1.3 NM			1.0 NM		
CATEGORY	A	B	C	D										
S-ILS 7		715-¾	200 (200-¾)											
S-LOC 7		880-1	365 (400-1)											
CIRCLING	980-1 451 (500-1)	1000-1 471 (500-1)	1000-1½ 471 (500-1½)	1080-2 551 (600-2)										



SE-2, 08 OCT 2020 to 05 NOV 2020

SE-2, 08 OCT 2020 to 05 NOV 2020