

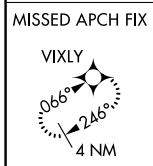
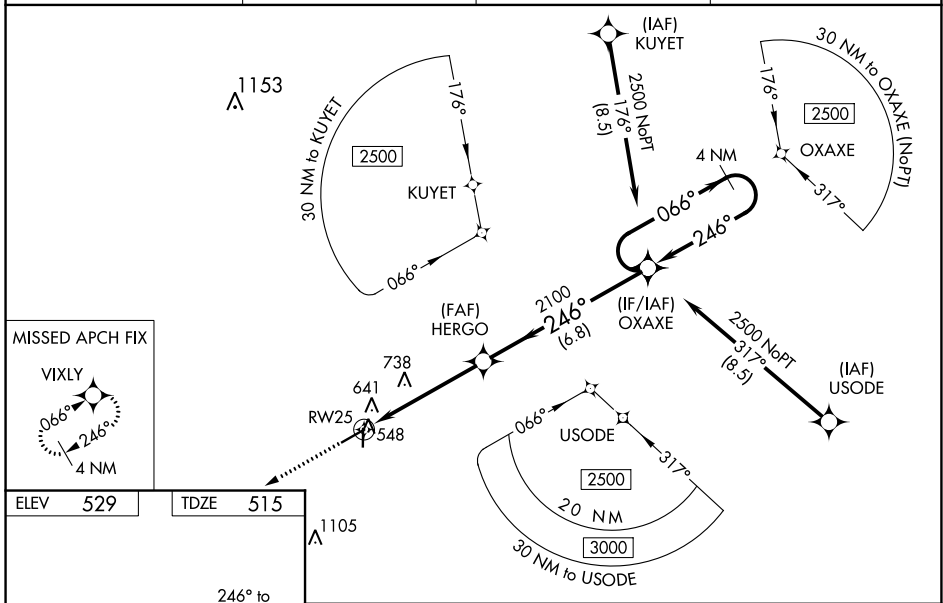
|                                 |                        |                             |   |
|---------------------------------|------------------------|-----------------------------|---|
| WAAS<br>CH <b>50301</b><br>W25A | APP CRS<br><b>246°</b> | Rwy Idg<br>TDZE<br>Apt Elev | <b>5500</b><br><b>515</b><br><b>529</b> |
|---------------------------------|------------------------|-----------------------------|---|

# RNAV (GPS) RWY 25

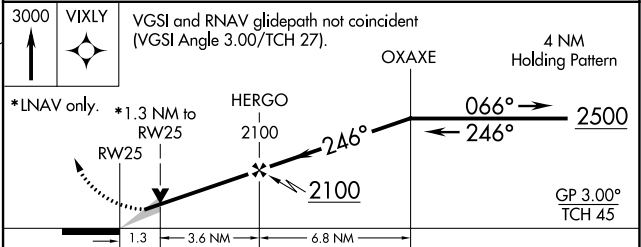
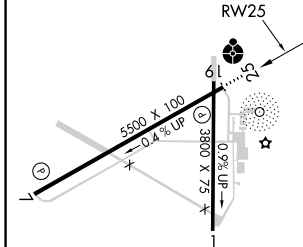
AIKEN RGNL (AIK)

|  |              |  |
|--|--------------|--|
| RNP APCH.  | <p>ODALS</p> | <p>MISSED APPROACH:<br/>Climb to 3000 direct<br/>VIXLY and hold.</p> |
| <p><b>⚠</b> Baro-VNAV NA when using Augusta Rgnl at Bush Field altimeter setting.<br/> <b>⚠</b> For uncompensated Baro-VNAV systems, LNAV/VNAV NA below -16°C or above 40°C. VDP NA with Augusta Rgnl at Bush Field altimeter setting.<br/>                 When local altimeter setting not received, use Augusta Rgnl at Bush Field altimeter setting: increase LPV all Cats DA to 869 feet, LNAV/VNAV all Cats DA to 927 feet and all visibilities 3/8 mile; increase all MDA 120 feet and Cat C/D visibilities 1/4 mile. For inop ODALS, increase LPV all Cats visibility to 3/8 mile, LNAV/VNAV all Cats to 1/8 mile and LNAV Cat C/D to 1/4 mile. For inop ODALS when using Augusta Rgnl at Bush Field altimeter setting, increase LPV all Cats visibility to 1/4 mile, LNAV/VNAV all Cats to 1/2 mile and LNAV Cat D to 1/8 mile.</p> |              |  |

|                          |  |                            |                               |
|--------------------------|--|----------------------------|-------------------------------|
| AWOS-3<br><b>118.025</b> | AUGUSTA APP CON *<br><b>119.15 284.625</b> | CLNC DEL<br><b>126.075</b> | UNICOM<br><b>122.8 (CTAF)</b> |
|--------------------------|--|----------------------------|-------------------------------|



|          |          |
|----------|----------|
| ELEV 529 | TDZE 515 |
|----------|----------|



|              |                       |               |         |               |
|--------------|-----------------------|---------------|---------|---------------|
| CATEGORY     | A                     | B             | C       | D             |
| LPV DA       | 765-3/4 250 (300-3/4) |               |         |               |
| LNAV/VNAV DA | 823-1 308 (300-1)     |               |         |               |
| LNAV MDA     | 940-3/4               | 425 (500-3/4) | 940-1/8 | 425 (500-1/8) |

SE-2, 08 OCT 2020 to 05 NOV 2020

SE-2, 08 OCT 2020 to 05 NOV 2020