

LOC I-MHK 111.3	APP CRS 036°	Rwy Idg 7000
		TDZE 1056
		Apt Elev 1066

ILS or LOC RWY 3

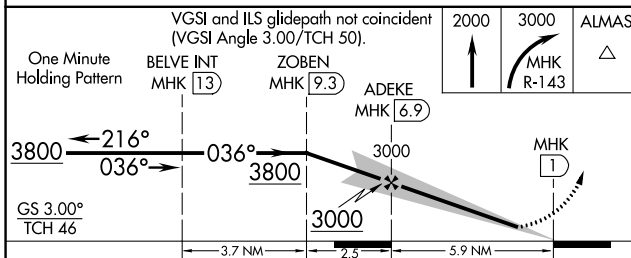
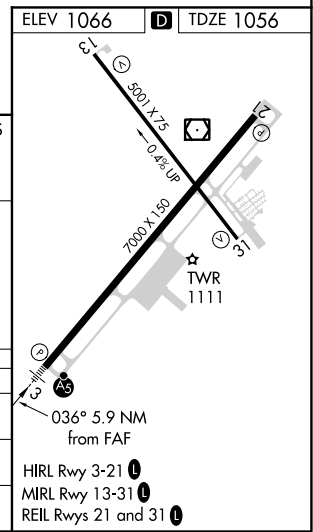
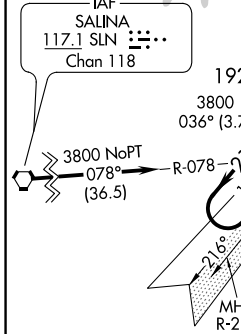
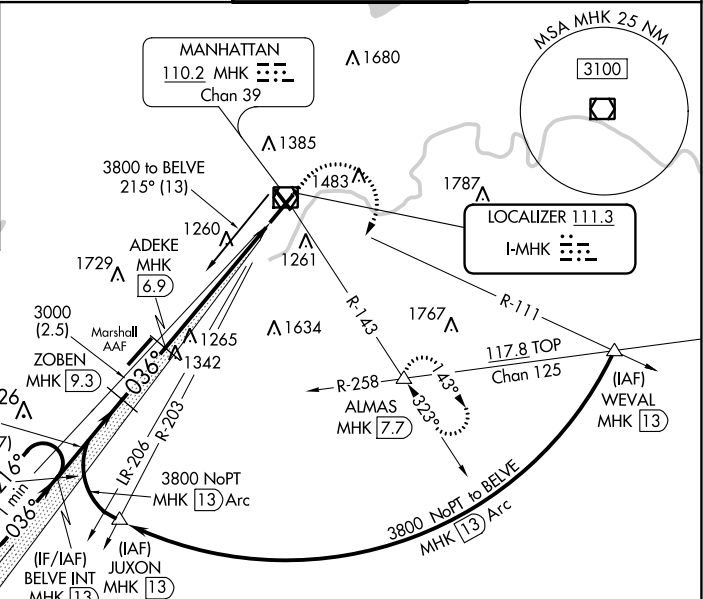
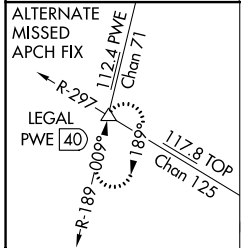
MANHATTAN RGNL (MHK)

⚠ For inop MALSRL when using Marshall AAF altimeter setting, increase S-ILS 3 all Cats visibility to 1 1/4 mile. Circling NA west of Rwy 3-21. Helicopter visibility reduction below 3/4 SM NA. When local altimeter setting not received, use Marshall AAF altimeter setting and increase all DA 16 feet and all MDA 20 feet. For inop MALSRL, increase S-LOC 3 Cats A/B visibility 1/4 mile. Inop table does not apply to S-ILS 3. DME Required.

MALSRL
AS 5

MISSED APPROACH: Climb to 2000 then climbing right turn to 3000 via MHK VOR/DME R-143 to ALMAS INT/MHK 7.7 DME and hold.

ASOS 119.075	MARSHALL GCA* 121.25 254.35	MANHATTAN TOWER* 118.55 (CTAF)	GND CON 121.85
------------------------	---------------------------------------	--	--------------------------



CATEGORY	A	B	C	D
S-ILS 3	1256-3/4 200 (200-3/4)			
S-LOC 3	1520-3/4 464 (500-3/4)		1520-1 464 (500-1)	
CIRCLING	1600-1 534 (600-1)	1700-1 634 (700-1)	1700-1 3/4 634 (700-1 3/4)	1780-2 1/4 714 (800-2 1/4)

NC-2, 08 OCT 2020 to 05 NOV 2020

NC-2, 08 OCT 2020 to 05 NOV 2020