

WAAS CH <b>53319</b> <b>W21A</b>	APP CRS <b>216°</b>	Rwy Idg TDZE Apt Elev	<b>7000</b> <b>1048</b> <b>1066</b>
--	------------------------	-----------------------------	---

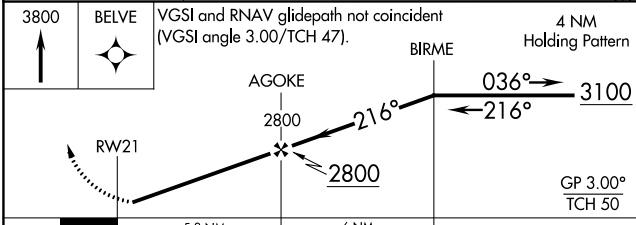
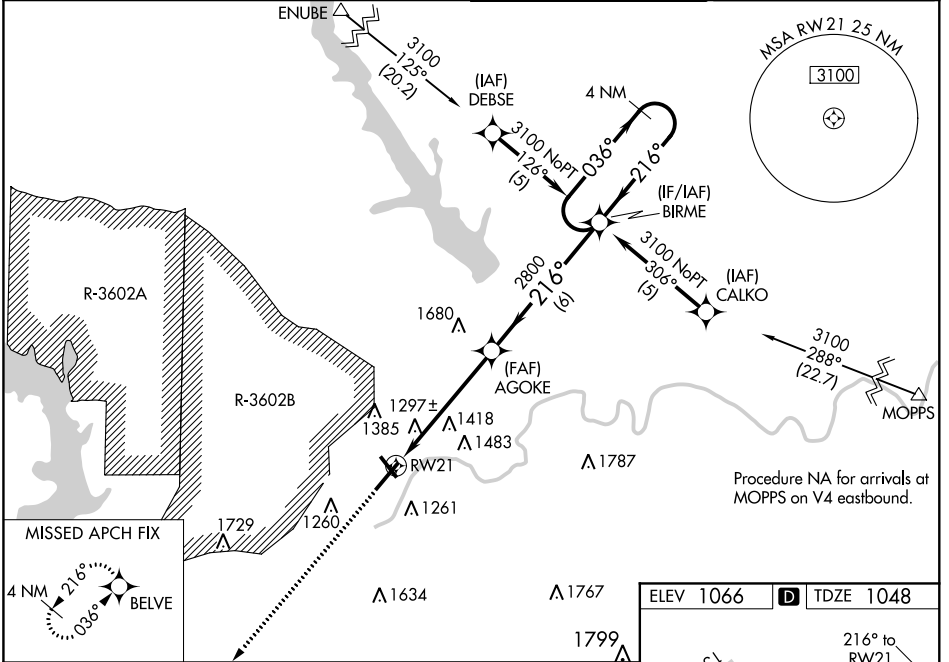
# RNAV (GPS) RWY 21

MANHATTAN RGNL (MHK)

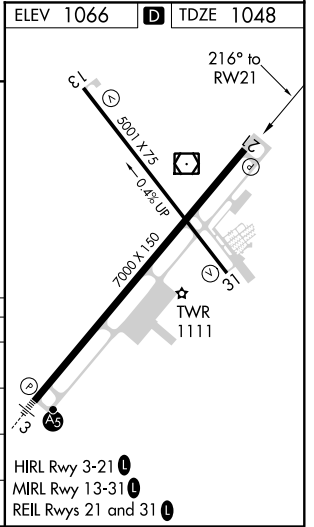
**⚠** Circling NA west of Rwy 3-21. Baro-VNAV NA when using Marshall AAF altimeter setting. For uncompensated Baro-VNAV systems, LNAV/VNAV NA below -17°C (2°F) or above 46°C (114°F). DME/DME RNP-0.3 NA. When local altimeter setting not received, use Marshall AAF altimeter setting: increase LPV DA to 1264 feet, LNAV/VNAV DA to 1718 feet; increase all MDAs 20 feet and visibility Cat C 1/8 SM.

MISSED APPROACH: Climb to 3800 direct BELVE and hold.

ASOS <b>119.075</b>	MARSHALL GCA* <b>121.25 254.35</b>	MANHATTAN TOWER* <b>118.55 (CTAF) 0</b>	GND CON <b>121.85</b>
------------------------	---------------------------------------	--	--------------------------



CATEGORY	A	B	C	D
LPV DA	1248-3/4 200 (200-3/4)			
LNAV/VNAV DA	1702-2 1/2 654 (700-2 1/2)			
LNAV MDA	1720-1	672 (700-1)	1720-1 7/8 672 (700-1 7/8)	1720-2 672 (700-2)
CIRCLING	1680-1 614 (700-1)	1700-1 634 (700-1)	1700-1 7/8 634 (700-1 7/8)	1780-2 1/4 714 (800-2 1/4)



NC-2, 08 OCT 2020 to 05 NOV 2020

NC-2, 08 OCT 2020 to 05 NOV 2020