

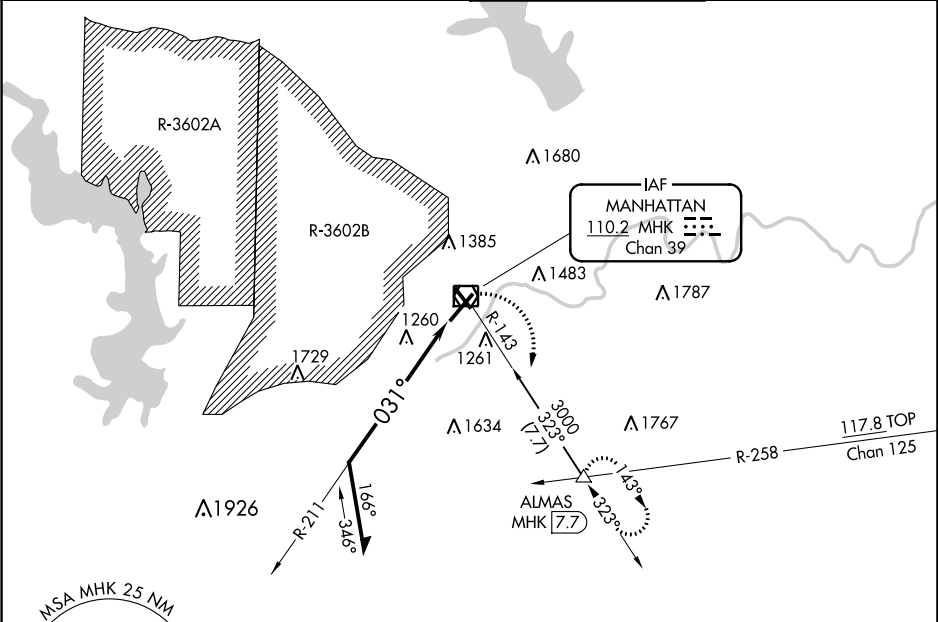
VOR/DME MHK 110.2 Chan 39	APP CRS 031°	Rwy Idg TDZE Apt Elev	7000 1056 1066
---	------------------------	-----------------------------	---

VOR RWY 3

MANHATTAN RGNL (MHK)

<p>⚠ Visibility reduction by helicopters NA. Circling NA west of Rwy 3-21. When local altimeter setting not received, use Marshall AAF altimeter setting and increase all MDA 20 feet. VDP NA with Marshall AAF altimeter setting.</p>	<p>MALSR AS</p>	<p>MISSED APPROACH: Climbing right turn to 3000 via MHK VOR/DME R-143 to ALMAS INT/MHK 7.7 DME and hold.</p>
---	----------------------------	--

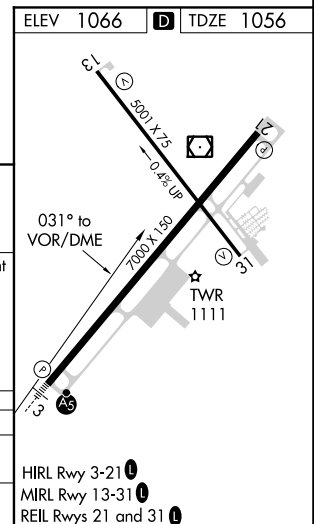
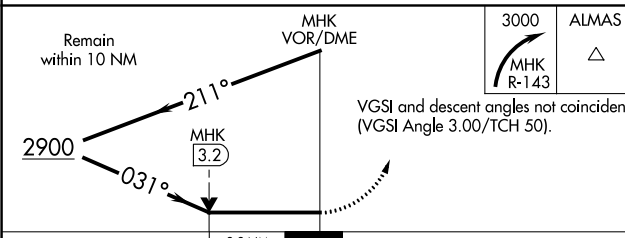
ASOS 119.075	MARSHALL GCA * 121.25 254.35	MANHATTAN TOWER * 118.55 (CTAF) 0	GND CON 121.85
------------------------	--	---	--------------------------



NC-2, 08 OCT 2020 to 05 NOV 2020

NC-2, 08 OCT 2020 to 05 NOV 2020

MSA MHK 25 NM [3100]



CATEGORY	A	B	C	D
S-3	1820-1 754 (800-1)	764 (800-1)	1820-1 1/4 764 (800-1 1/4)	1820-2 764 (800-2)
CIRCLING	1820-1 754 (800-1)	1820-1 1/4 754 (800-1 1/4)	1820-2 1/4 754 (800-2 1/4)	1820-2 1/2 754 (800-2 1/2)

HIRL Rwy 3-21
MRL Rwy 13-31
REIL Rws 21 and 31