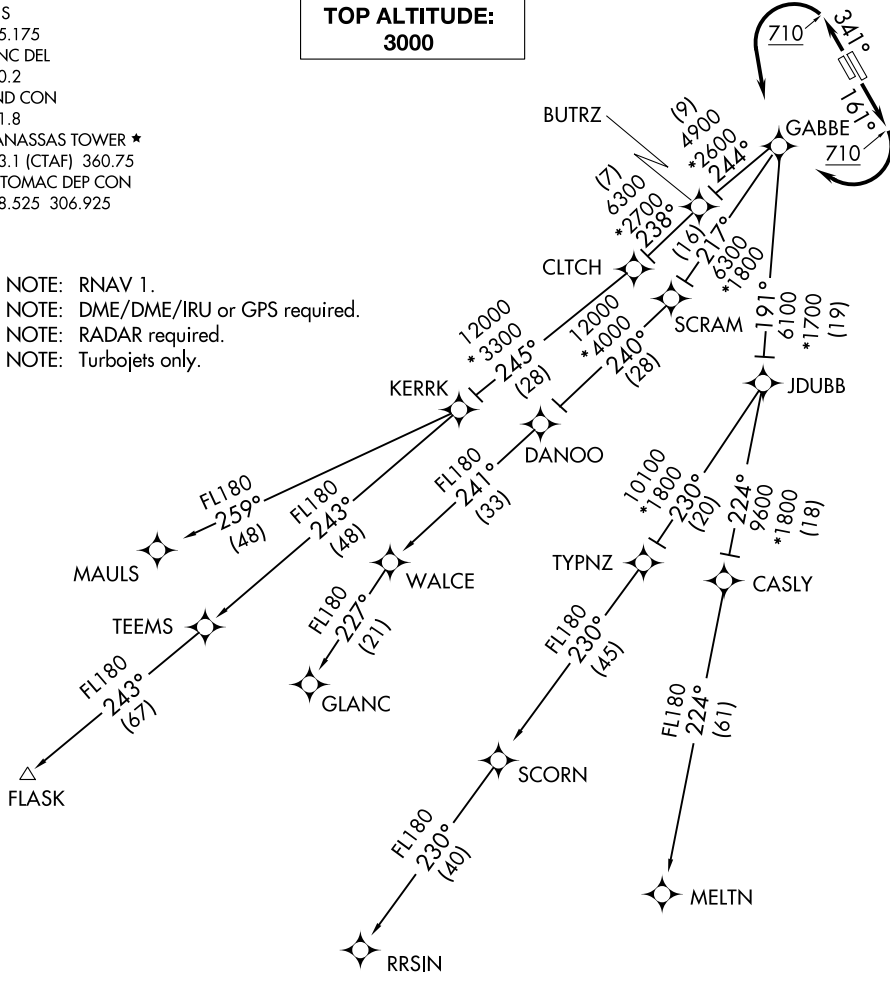


GABBE THREE DEPARTURE(RNAV) AL-5326 (FAA)

ATIS
125.175
CLNC DEL
120.2
GND CON
121.8
MANASSAS TOWER *
133.1 (CTAF) 360.75
POTOMAC DEP CON
128.525 306.925

**TOP ALTITUDE:
3000**

- NOTE: RNAV 1.
- NOTE: DME/DME/IRU or GPS required.
- NOTE: RADAR required.
- NOTE: Turbojets only.



TAKEOFF MINIMUMS:
Rwy 16L/R, 34L/R: Standard with minimum climb
of 500' per NM to 710.

(NARRATIVE ON FOLLOWING PAGE)

NOTE: Chart not to scale.

NE-3, 08 OCT 2020 to 05 NOV 2020

NE-3, 08 OCT 2020 to 05 NOV 2020