

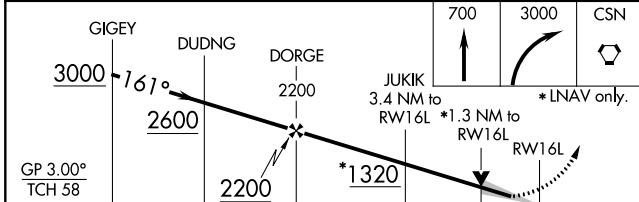
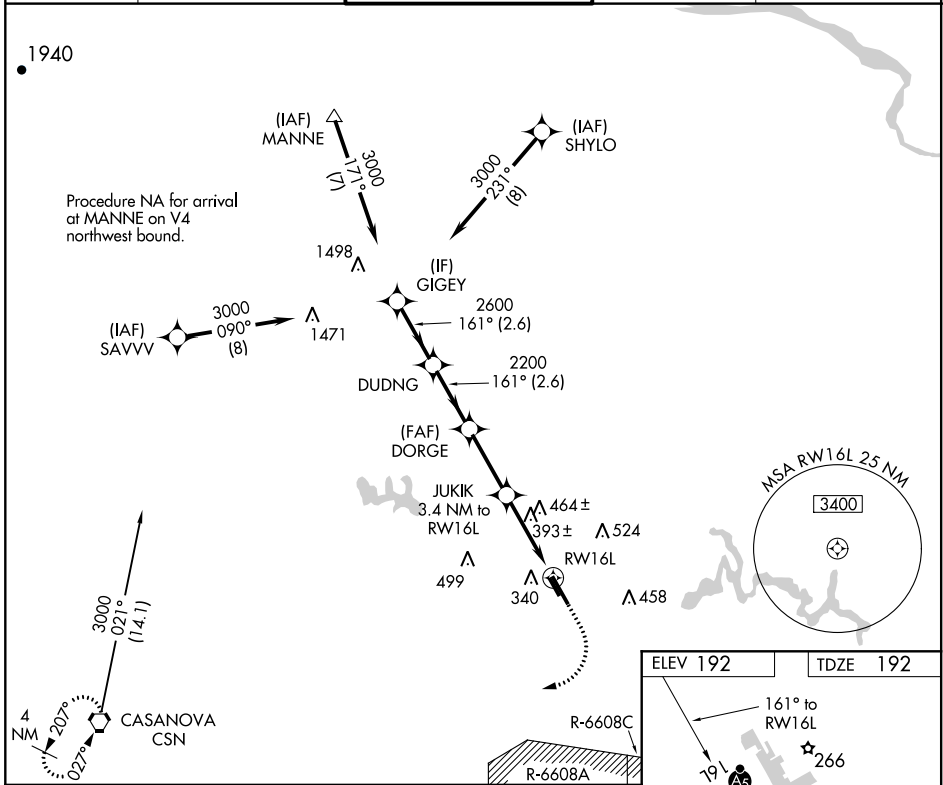
WAAS CH <b>70302</b> <b>W16A</b>	APP CRS <b>161°</b>	Rwy ldg TDZE <b>192</b> Apt Elev <b>192</b>
----------------------------------------	------------------------	---------------------------------------------------

# RNAV (GPS) RWY 16L

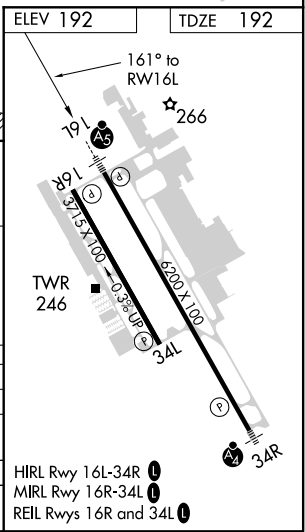
MANASSAS RGNL/HARRY P DAVIS FIELD (HEF)

RNP APCH. RADAR required.	MALSR	MISSED APPROACH: Climb to 700 then climbing right turn to 3000 direct CSN VORTAC and hold.
▼ For uncompensated Baro-VNAV systems, LNAV/VNAV NA below -15°C or above 54°C. For inop ALS, increase LNAV Cat C/D visibility to 1 3/8 SM.		

ATIS <b>125.175</b>	POTOMAC APP CON <b>128.525 306.925</b>	MANASSAS TOWER ★ <b>133.1 (CTAF) 360.75</b>	GND CON <b>121.8</b>	CLNC DEL <b>120.2</b>
------------------------	-------------------------------------------	------------------------------------------------	-------------------------	--------------------------



CATEGORY	A	B	C	D
LPV DA		442-1/2	250 (300-1/2)	
LNAV/VNAV DA		635-1	443 (500-1)	
LNAV MDA	660-1/2	468 (500-1/2)	660-1	468 (500-1)
◻ CIRCLING	720-1 528 (600-1)	740-1 548 (600-1)	840-1 3/4 648 (700-1 3/4)	880-2 1/4 688 (700-2 1/4)



NE-3, 08 OCT 2020 to 05 NOV 2020

NE-3, 08 OCT 2020 to 05 NOV 2020