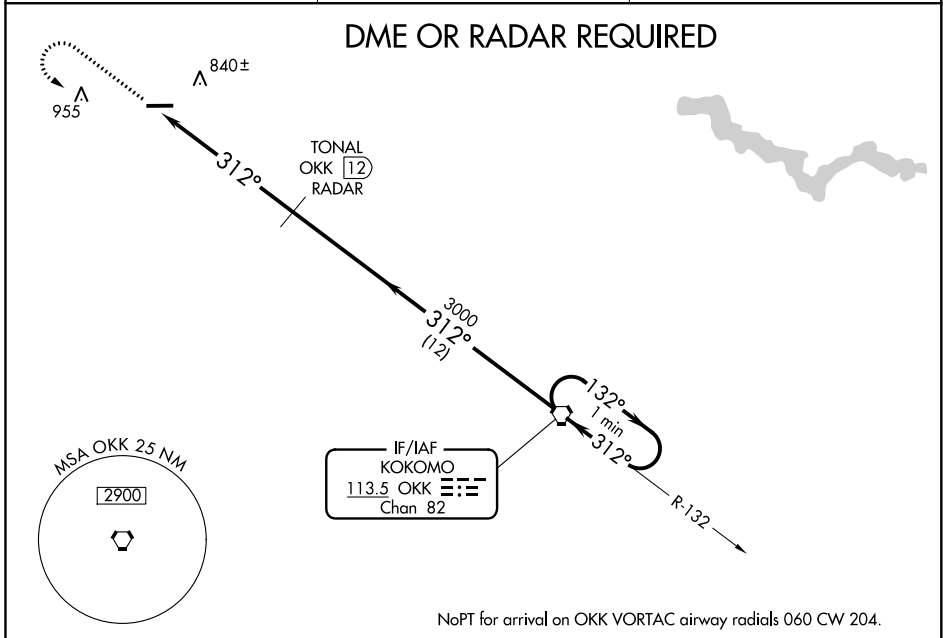


VORTAC OKK <b>113.5</b> Chan <b>82</b>	APP CRS <b>312°</b>	Rwy Idg TDZE Apt Elev	<b>N/A</b> <b>N/A</b> <b>738</b>
--	------------------------	-----------------------------	--

**VOR-A**  
LOGANSPORT/CASS COUNTY (GGP)

**⚠** When local altimeter setting not received, use Grissom ARB altimeter setting. MISSED APPROACH: Climb to 3000, then left turn on OKK VORTAC R-312 to OKK VORTAC and hold.

AWOS-3P <b>118.5</b>	GRISSOM APP CON ★ <b>121.05 338.275</b>	UNICOM <b>122.8</b> (CTAF) <b>0</b>
-------------------------	--	--



ELEV **738** **D**

MIRL Rwy 9-27 **0**  
REIL Rwys 9 and 27 **0**

FAF to MAP 5.9 NM

Knots	60	90	120	150	180
Min:Sec	5:54	3:56	2:57	2:22	1:58

**1649**  
⚠

CATEGORY	A	B	C	D
CIRCLING	1200-1	462 (500-1)	1200-1½ 462 (500-1½)	1300-2 562 (600-2)
GRISSOM ARB ALTIMETER SETTING MINIMUMS				
CIRCLING	1240-1	502 (600-1)	1240-1½ 502 (600-1½)	1340-2 602 (700-2)

EC-2, 08 OCT 2020 to 05 NOV 2020

EC-2, 08 OCT 2020 to 05 NOV 2020