

WAAS CH <b>78333</b> <b>W18A</b>	APP CRS <b>181°</b>	Rwy Idg <b>4200</b> TDZE <b>242</b> Apt Elev <b>243</b>
--	------------------------	---

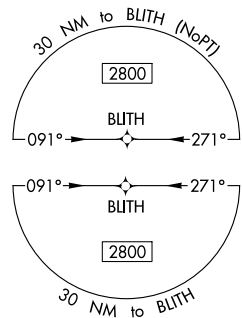
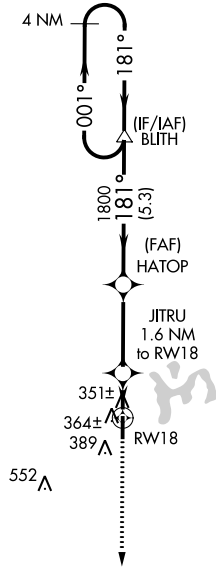
# RNAV (GPS) RWY 18

MANILA MUNI (MXA)

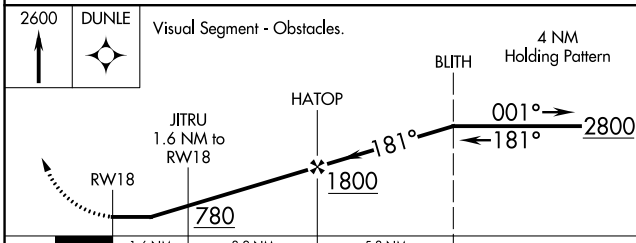
**⚠** DME/DME RNP-0.3 NA. Rwy 18 Straight-in and Circling and Circling to Rwy 36 NA at night.  
**⚠** Helicopter visibility reduction below 1 SM NA. Use Blytheville Muni altimeter setting; when not received, use Jonesboro altimeter setting and increase all MDA 20 feet.

**MISSED APPROACH:**  
Climb to 2600 direct DUNLE and hold.

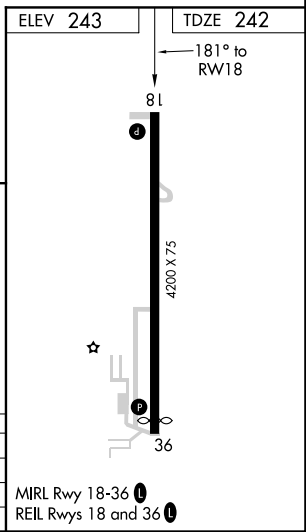
HKA ASOS <b>135.025</b>	MEMPHIS CENTER <b>120.075 289.4</b>	UNICOM <b>122.8 (CTAF)</b>
----------------------------	--	-------------------------------



⚠745



CATEGORY	A	B	C	D
LP MDA	640-1	398 (400-1)		NA
LNAV MDA	660-1	418 (500-1)		NA
<b>C</b> CIRCLING	740-1	497 (500-1)		NA



SC-1, 08 OCT 2020 to 05 NOV 2020

SC-1, 08 OCT 2020 to 05 NOV 2020