

LOC/DME I-PGV 110.7 Chan 44	APP CRS 197°	Rwy Idg 6505 TDZE 25 Apt Elev 26
--	------------------------	---

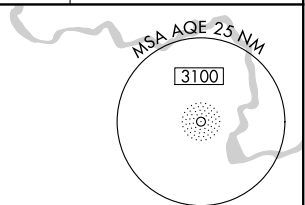
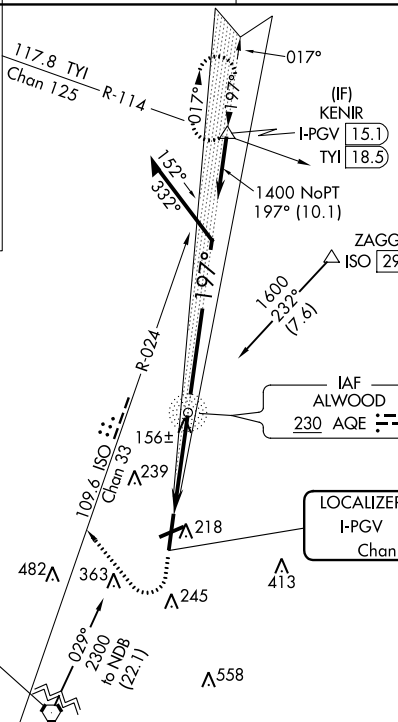
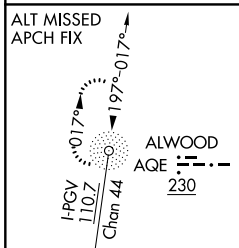
ILS Z or LOC Z RWY 20

PITT-GREENVILLE (PGV)

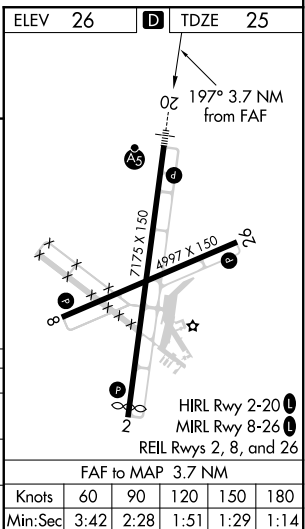
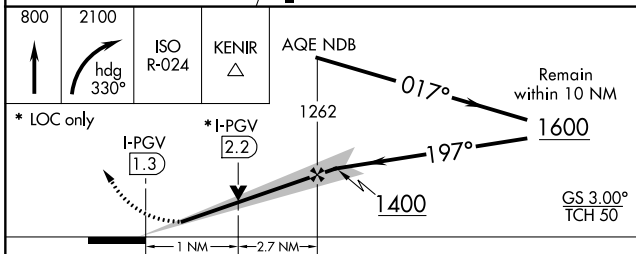
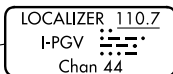
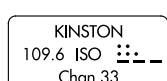
⚠ Night Landing: Rwy 8 NA. ADF required. VDP NA with Washington altimeter setting. When local altimeter setting not received, use Washington altimeter setting and increase all DA to 297 and increase all MDA 60 feet; increase S-LOC 20 Cat C/D visibility and Circling Cat C/D visibility ¼ mile. For inop MALSRL when using Washington altimeter setting, increase S-ILS 20 all Cats visibility to ¾ mile.

MALSRL
AS
MISSED APPROACH: Climb to 800 then climbing right turn to 2100 on heading 330° and on ISO VORTAC R-024 to KENIR INT/15.1 DME and hold.

AWOS-3 128.425	WASHINGTON CENTER 123.85 279.65	CLNC DEL 122.35	UNICOM 122.8 (CTAF)
--------------------------	---	---------------------------	-------------------------------



Procedure NA for arrivals at ZAGGY on V472 southwest bound.



CATEGORY	A	B	C	D
S-ILS 20	256-½		231 (300-½)	
S-LOC 20	420-½	395 (400-½)	420-⅝	395 (400-⅝)
C CIRCLING	600-1 574 (600-1)	620-1 594 (600-1)	680-1¾ 654 (700-1¾)	800-2¼ 774 (800-2¼)

SE-2, 08 OCT 2020 to 05 NOV 2020

SE-2, 08 OCT 2020 to 05 NOV 2020