

WAAS CH 42738 W02A	APP CRS 017°	Rwy Idg 6904 TDZE 24 Apt Elev 26
--	------------------------	---

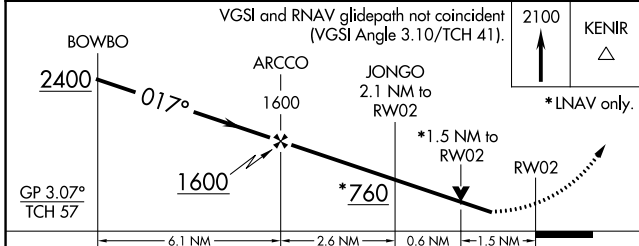
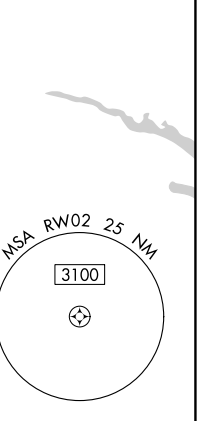
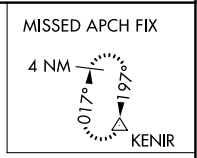
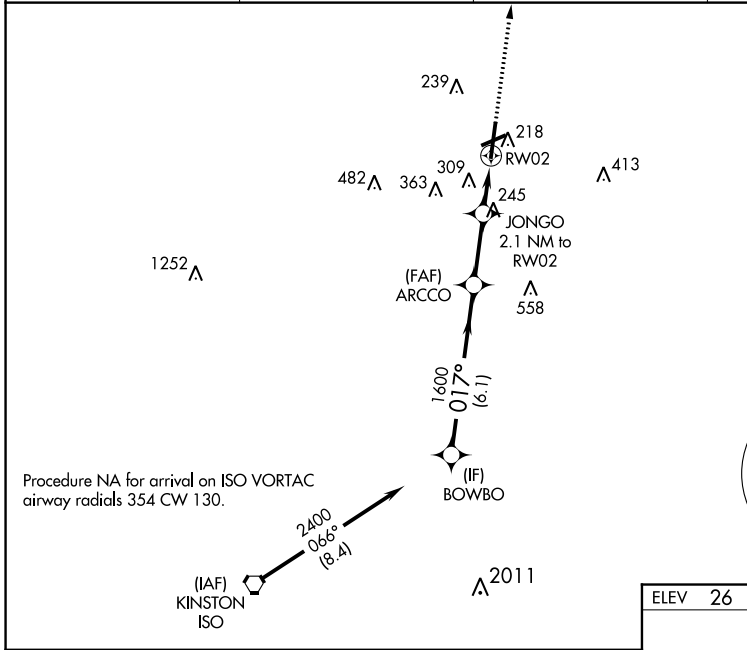
RNAV (GPS) RWY 2

PITT-GREENVILLE (PGV)

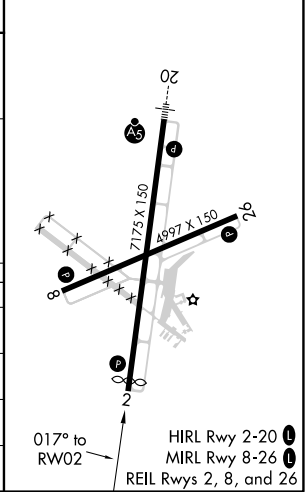
⚠ Night landing: Rwy 8 NA. Baro-VNAV NA when using Washington altimeter setting. For uncompensated Baro-VNAV systems, LNAV/VNAV NA below -15°C (5°F) or above 50°C (122°F). DME/DME RNP-0.3 NA. Helicopter visibility reduction below 3/4 SM NA. When local altimeter setting not received, use Washington altimeter setting: increase LPV DA to 444 feet and LNAV/VNAV DA to 661 feet and all MDA 60 feet; increase LPV all Cats visibility 1/8 mile and LNAV/VNAV all Cats visibility 1/2 mile and LNAV Cat C/D and Circling Cat C/D visibility 1/4 mile. VDP NA when using Washington altimeter setting.

MISSED APPROACH:
Climb to 2100 direct KENIR and hold.

AWOS-3 128.425	WASHINGTON CENTER 123.85 279.65	CLNC DEL 122.35	UNICOM 122.8 (CTAF) Ⓛ
--------------------------	---	---------------------------	--



ELEV 26	D	TDZE 24
---------	----------	---------



CATEGORY	A	B	C	D
LPV DA		403-1 1/4	379 (400-1 1/4)	
LNAV/VNAV DA		620-2	596 (600-2)	
LNAV MDA	540-1	516 (600-1)	540-1 3/8	516 (600-1 3/8)
C CIRCLING	600-1	620-1	680-1 3/4	800-2 1/2
	574 (600-1)	594 (600-1)	654 (700-1 3/4)	774 (800-2 1/2)

SE-2, 08 OCT 2020 to 05 NOV 2020

SE-2, 08 OCT 2020 to 05 NOV 2020