


WAAS CH 87011 W20A	APP CRS 197°	Rwy Idg TDZE 25 Apt Elev 26
--	------------------------	---

RNAV (GPS) RWY 20

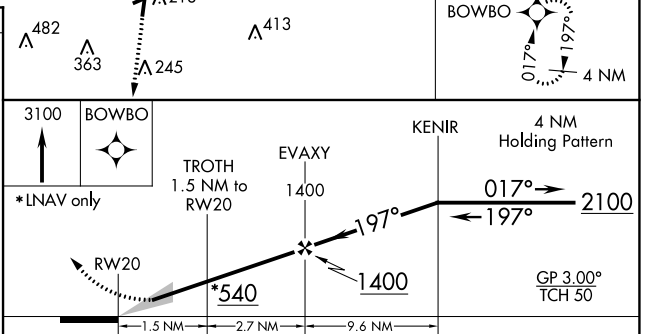
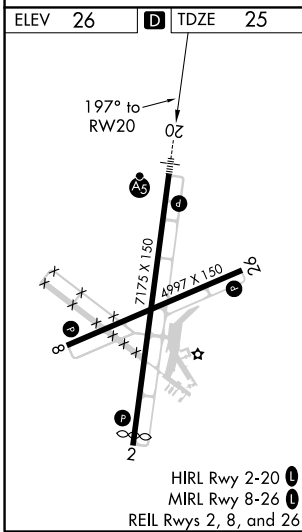
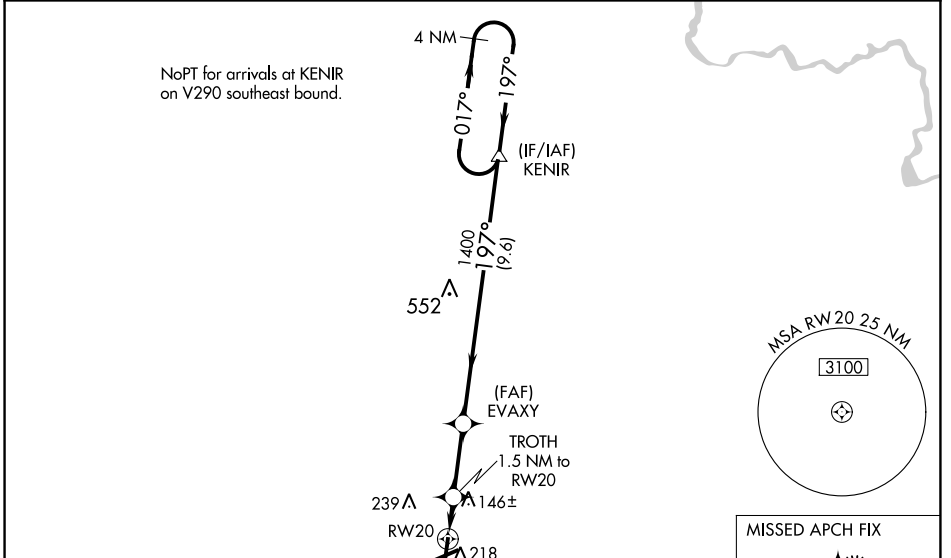
PITT-GREENVILLE (PGV)

▽ Night landing: Rwy 8 NA. Baro-VNAV NA when using Washington altimeter setting. For uncompensated Baro-VNAV systems, LNAV/VNAV NA below -15°C (5°F) or above 54°C (130°F). DME/DME RNP-0.3 NA. When local altimeter setting not received, use Washington altimeter setting: increase LPV DA to 271 feet and LNAV/VNAV DA to 344 feet and all MDA 60 feet; increase LNAV/VNAV all Cats and LNAV Cats C/D visibility 1/8 mile and increase Circling Cats C/D visibility 1/4 mile. For inop MALSRS, increase LNAV/VNAV all Cats visibility to 7/8 mile and LNAV Cats C/D visibility to 1 mile. For inop MALSRS when using Washington altimeter setting, increase LNAV/VNAV all Cats visibility to 1 mile.

MALSRS


MISSED APPROACH:
 Climb to 3100 direct BOWBO and hold, continue climb-in-hold to 3100.

AWOS-3 128.425	WASHINGTON CENTER 123.85 279.65	CLNC DEL 122.35	UNICOM 122.8 (CTAF)
--------------------------	---	---------------------------	-------------------------------



CATEGORY	A		B	C	D
	LPV DA	230-1/2		205 (300-1/2)	
LNAV/VNAV DA	303-1/2		278 (300-1/2)		
LNAV MDA	400-1/2	375 (400-1/2)	400-5/8	375 (400-5/8)	
CIRCLING	600-1 574 (600-1)	620-1 594 (600-1)	680-1 3/4 654 (700-1 3/4)	800-2 1/2 774 (800-2 1/2)	

SE-2, 08 OCT 2020 to 05 NOV 2020

SE-2, 08 OCT 2020 to 05 NOV 2020